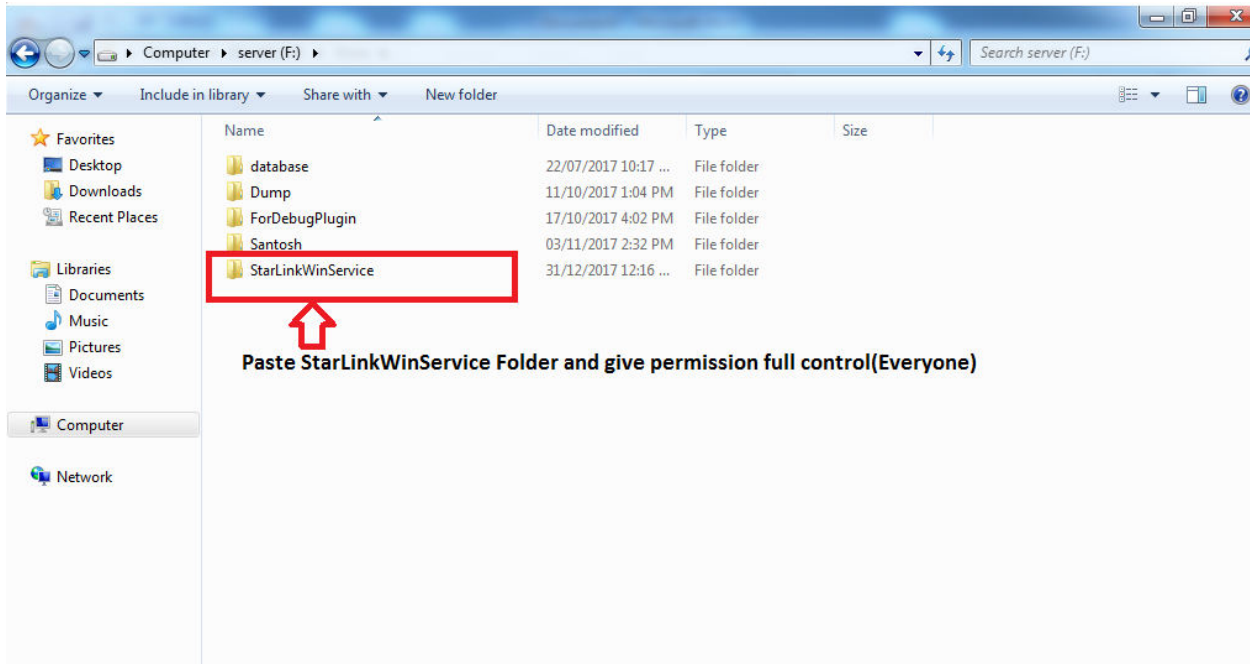
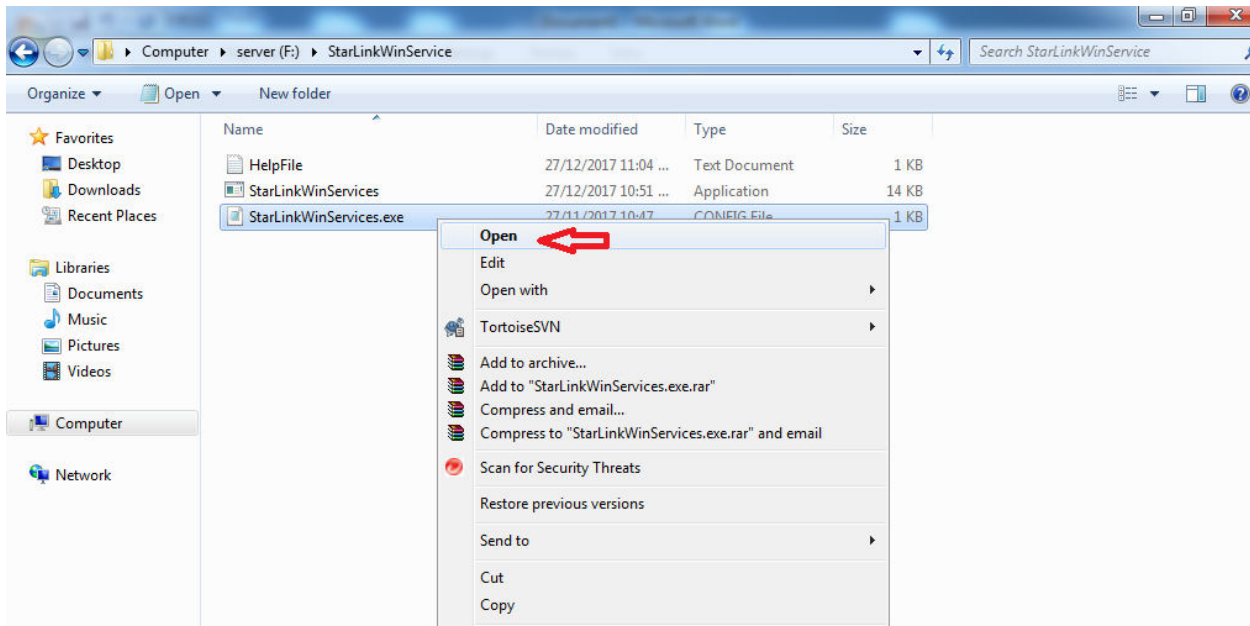


# Installation guide of Service For Time office

1. Paste the set up files in any drive on root and give full rights for this folder .



2. Go inside the above folder and open the starlinkwinservices.exe in notepad.

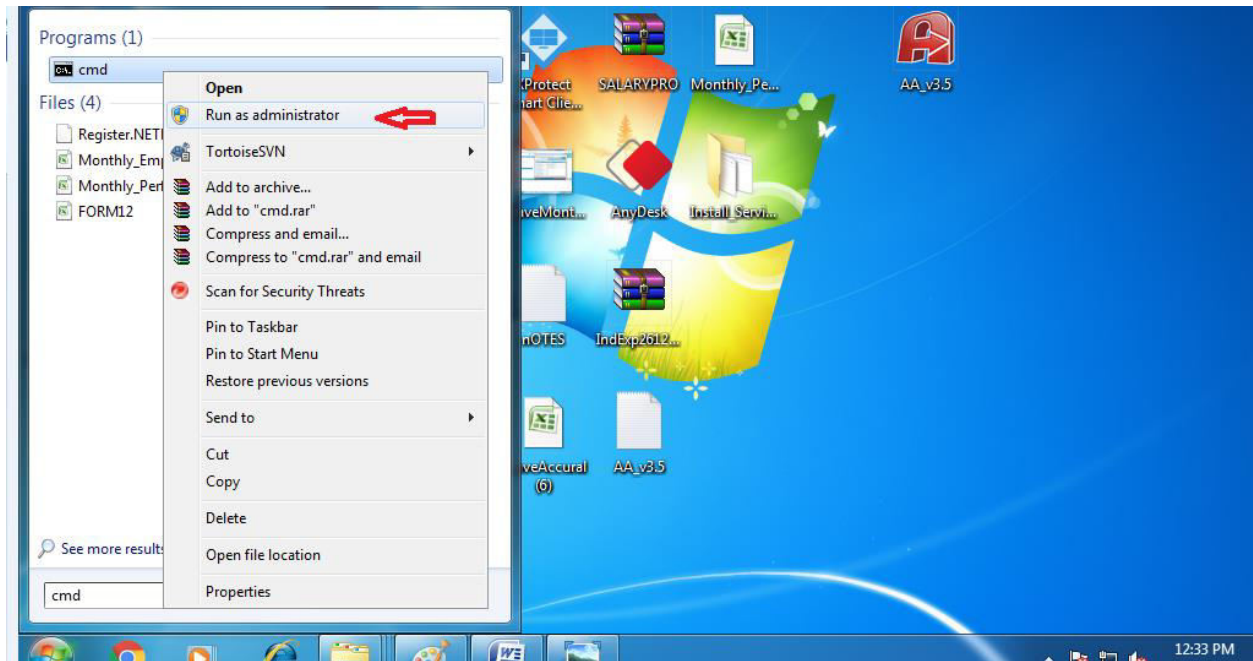


3. Change the data source name, catalog name, user id & password as per running SQL and save it.

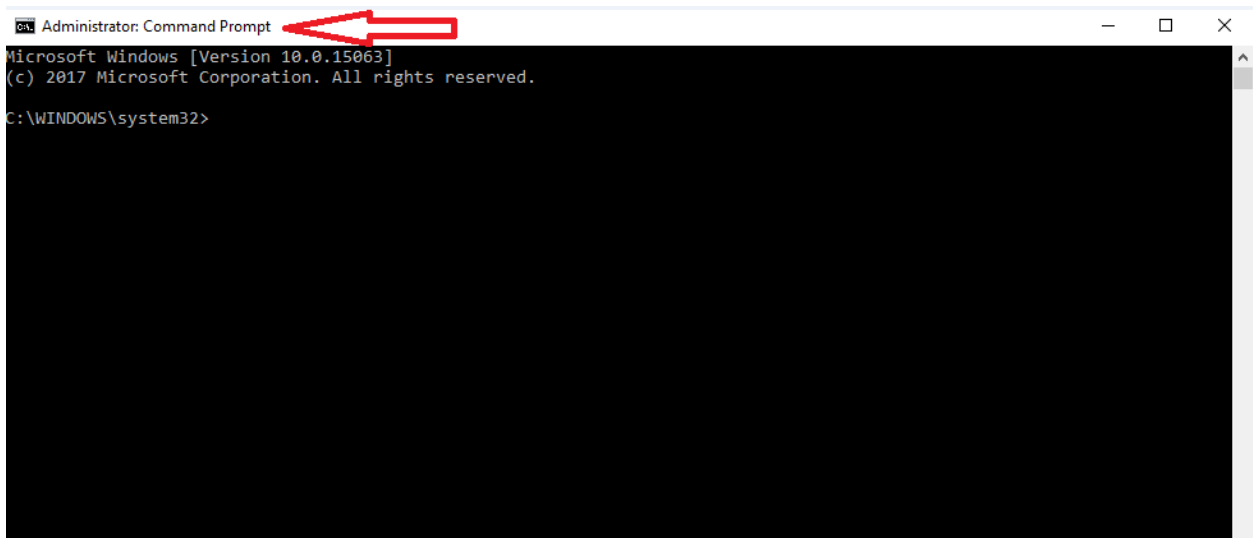
```
StarLinkWinServices.exe - Notepad
File Edit Format View Help
<?xml version="1.0" encoding="utf-8" ?>
<configuration>
  <connectionStrings>
    <add name="StarSqlConnectionString" connectionString="Data
Source=\\SQL EXPRESS;Initial Catalog=Starsql_Test11101;User ID=sa;
password=star;providerName="System.Data.SqlClient" " />
  </connectionStrings>
  <appSettings>
    <add key="interval" value="10"/>
  </appSettings>
</configuration>

Note:- Please Change data Source name, Catalog name , User id , Password accoring to SQL
Data Base
```

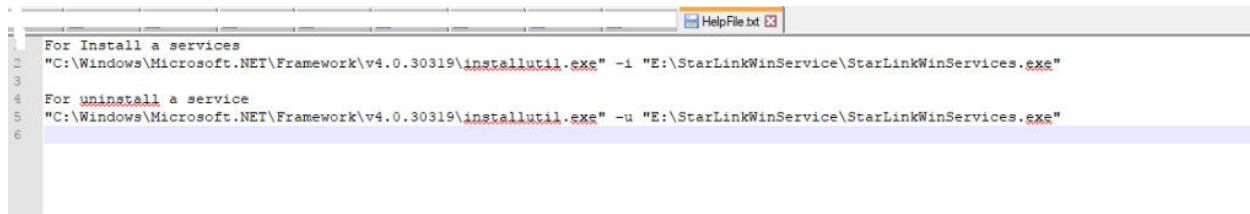
4. Open cmd as run as administrator.



5. Check if it is open as administrator . (See below highlighted area)

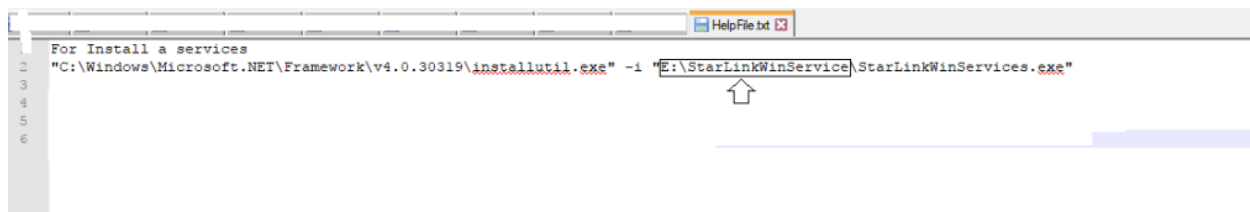


6. Now open helpfile.txt from given set up files.



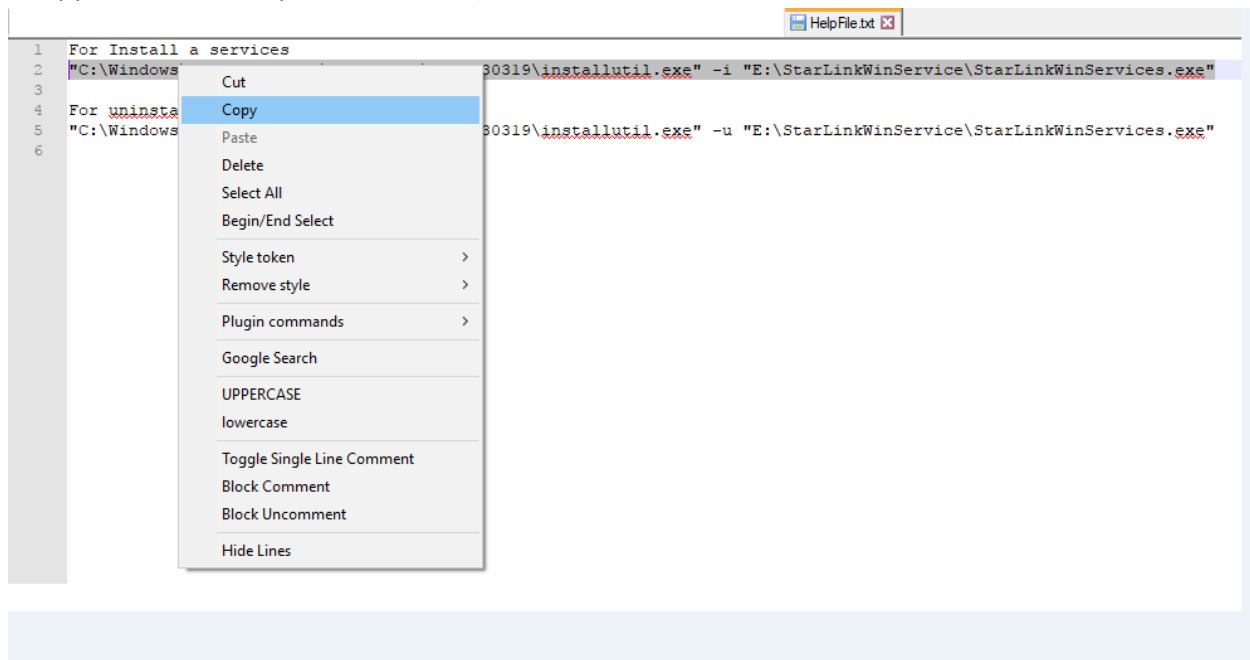
```
1 For Install a services
2 "C:\Windows\Microsoft.NET\Framework\v4.0.30319\installutil.exe" -i "E:\StarLinkWinService\StarLinkWinServices.exe"
3
4 For uninstall a service
5 "C:\Windows\Microsoft.NET\Framework\v4.0.30319\installutil.exe" -u "E:\StarLinkWinService\StarLinkWinServices.exe"
6
```

7. Change the path as per current location of folder.

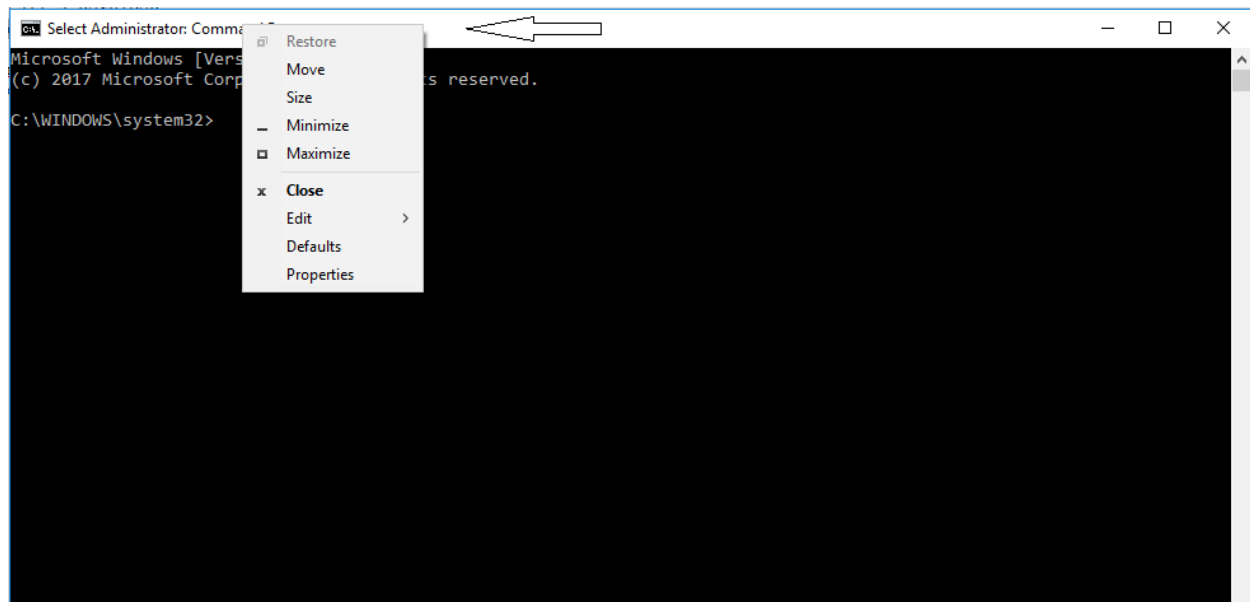


```
1 For Install a services
2 "C:\Windows\Microsoft.NET\Framework\v4.0.30319\installutil.exe" -i "E:\StarLinkWinService\StarLinkWinServices.exe"
3
4
5
6
```

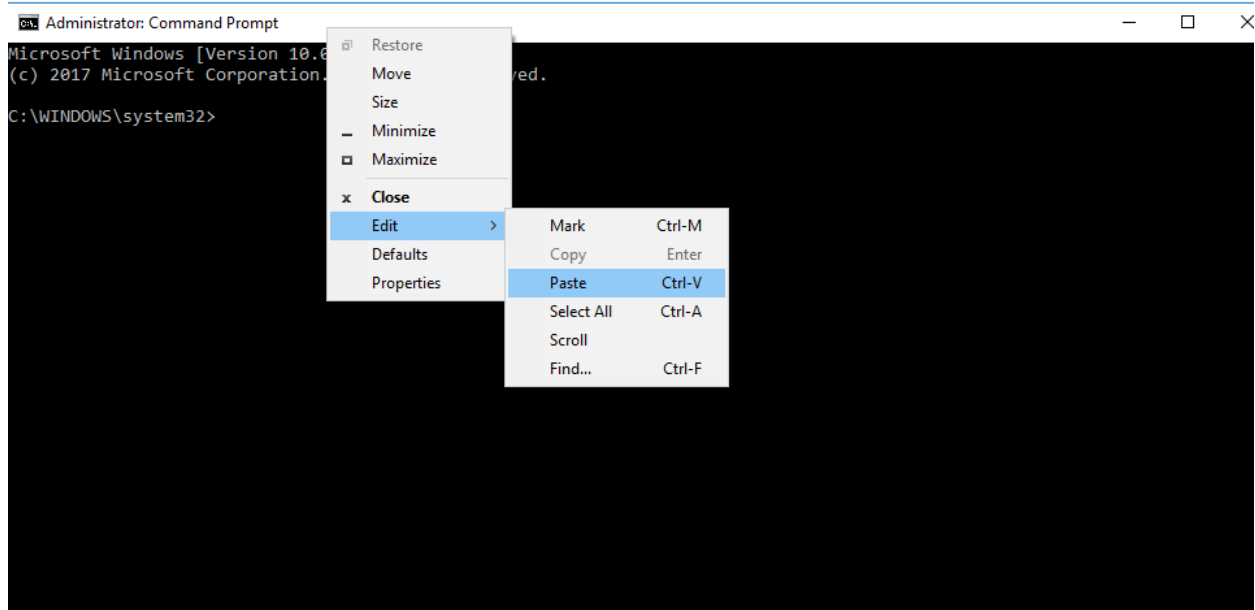
8. Copy the installation path. (see below)



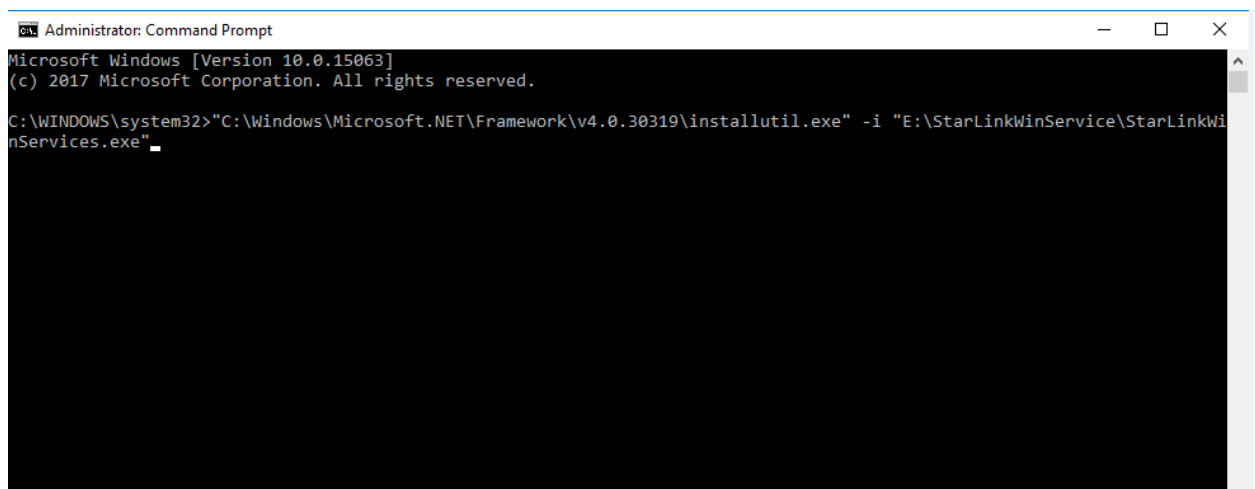
9. Right click on bar of cmd



10. Go to edit and paste the copied installation path.



11. After paste, it will look like as below. Now press Enter



12. Successfully installation process is going on .....At last successfully message is coming .

```
Administrator: Command Prompt
Microsoft Windows [Version 10.0.15063]
(c) 2017 Microsoft corporation. All rights reserved.

C:\WINDOWS\system32>C:\Windows\Microsoft.NET\Framework\v4.0.30319\installutil.exe -i "E:\StarLinkWinService\StarLinkWinServices.exe"
Microsoft (R) .NET Framework Installation utility Version 4.7.2046.0
Copyright (C) Microsoft corporation. All rights reserved.

Running a transacted installation.

Beginning the Install phase of the installation.
See the contents of the log file for the E:\StarLinkWinService\StarLinkWinServices.exe assembly's progress.
The file is located at E:\StarLinkWinService\StarLinkWinServices.InstallLog.
Installing assembly 'E:\StarLinkWinService\StarLinkWinServices.exe'.
Affected parameters are:
i =
  logfile = E:\StarLinkWinService\StarLinkWinServices.InstallLog
  assemblypath = E:\StarLinkWinService\StarLinkWinServices.exe
  logtoconsole =
Installing service StarLinkWinService...
Service StarLinkWinService has been successfully installed.
Creating EventLog source StarLinkWinService in log Application...

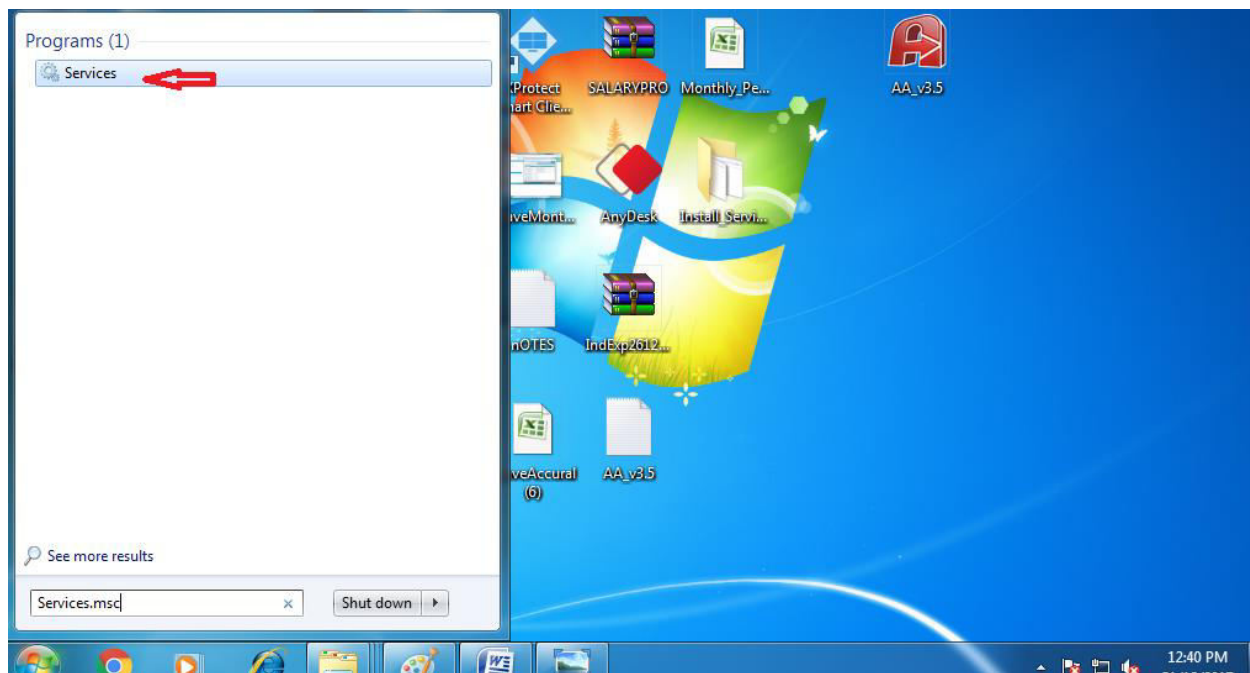
The Install phase completed successfully, and the Commit phase is beginning.
See the contents of the log file for the E:\StarLinkWinService\StarLinkWinServices.exe assembly's progress.
The file is located at E:\StarLinkWinService\StarLinkWinServices.InstallLog.
Committing assembly 'E:\StarLinkWinService\StarLinkWinServices.exe'.
Affected parameters are:
i =
  logfile = E:\StarLinkWinService\StarLinkWinServices.InstallLog
  assemblypath = E:\StarLinkWinService\StarLinkWinServices.exe
  logtoconsole =

The Commit phase completed successfully.

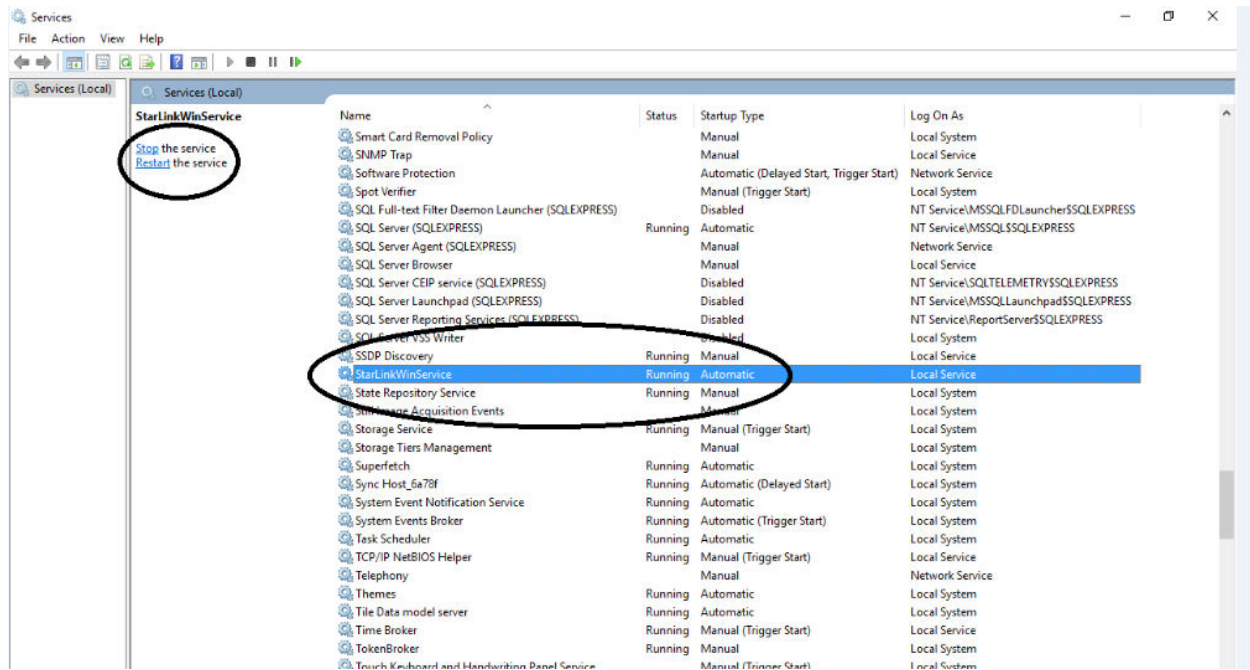
The transacted install has completed.

C:\WINDOWS\system32>
```

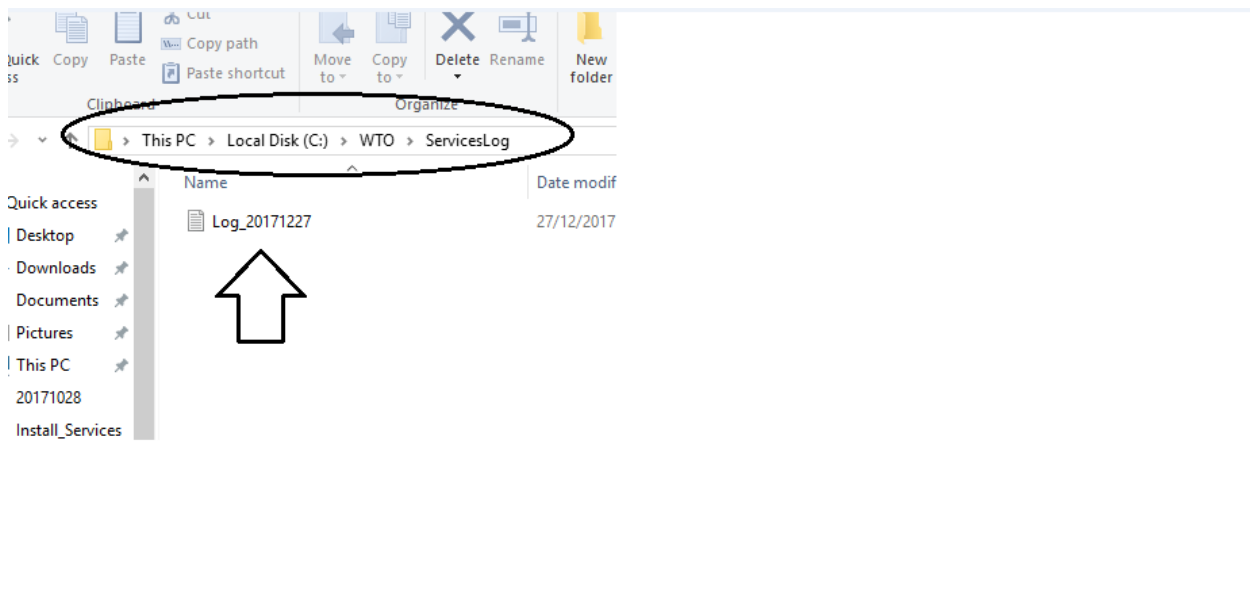
13. Go to Run and write services.msc. Open it.



14. Check the name starlinkwinservice is coming in the list of service. Now start it to run.

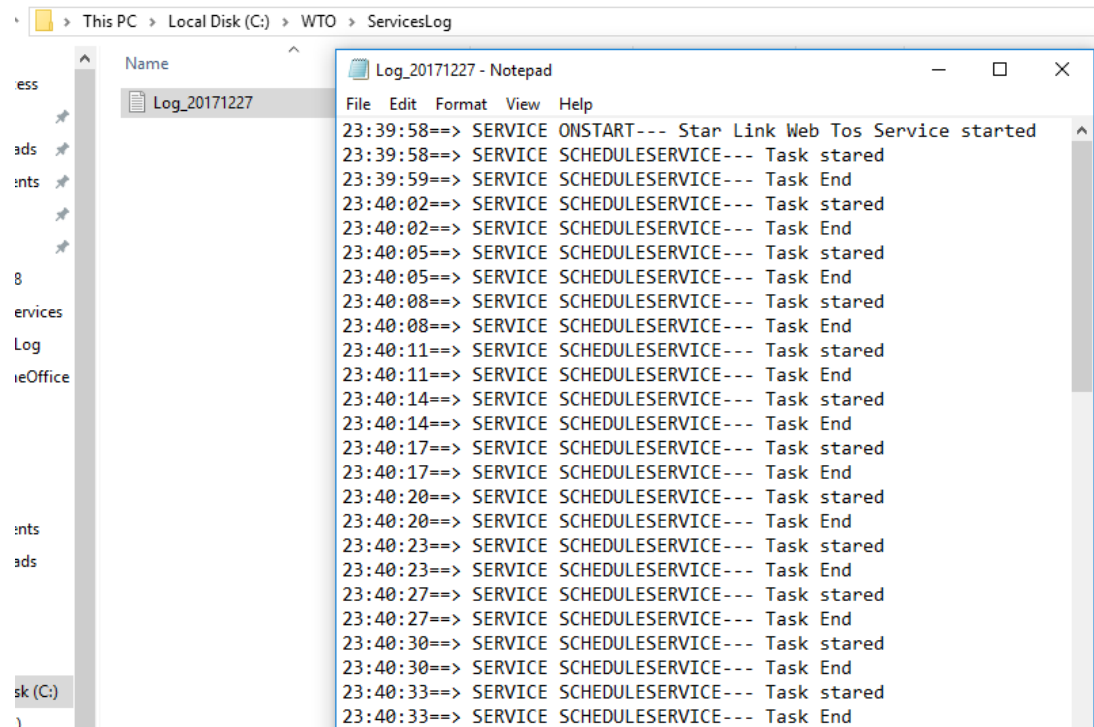


15. Go to C:\WTO\ServicesLog and click on current date log .





16.Message in Log file is coming as .....



The screenshot shows a Windows file explorer window with the path 'This PC > Local Disk (C:) > WTO > ServicesLog'. A file named 'Log\_20171227' is selected. A Notepad window titled 'Log\_20171227 - Notepad' is open, displaying the following log entries:

```
File Edit Format View Help
23:39:58==> SERVICE ONSTART--- Star Link Web Tos Service started
23:39:58==> SERVICE SCHEDULESERVICE--- Task started
23:39:59==> SERVICE SCHEDULESERVICE--- Task End
23:40:02==> SERVICE SCHEDULESERVICE--- Task started
23:40:02==> SERVICE SCHEDULESERVICE--- Task End
23:40:05==> SERVICE SCHEDULESERVICE--- Task started
23:40:05==> SERVICE SCHEDULESERVICE--- Task End
23:40:08==> SERVICE SCHEDULESERVICE--- Task started
23:40:08==> SERVICE SCHEDULESERVICE--- Task End
23:40:11==> SERVICE SCHEDULESERVICE--- Task started
23:40:11==> SERVICE SCHEDULESERVICE--- Task End
23:40:14==> SERVICE SCHEDULESERVICE--- Task started
23:40:14==> SERVICE SCHEDULESERVICE--- Task End
23:40:17==> SERVICE SCHEDULESERVICE--- Task started
23:40:17==> SERVICE SCHEDULESERVICE--- Task End
23:40:20==> SERVICE SCHEDULESERVICE--- Task started
23:40:20==> SERVICE SCHEDULESERVICE--- Task End
23:40:23==> SERVICE SCHEDULESERVICE--- Task started
23:40:23==> SERVICE SCHEDULESERVICE--- Task End
23:40:27==> SERVICE SCHEDULESERVICE--- Task started
23:40:27==> SERVICE SCHEDULESERVICE--- Task End
23:40:30==> SERVICE SCHEDULESERVICE--- Task started
23:40:30==> SERVICE SCHEDULESERVICE--- Task End
23:40:33==> SERVICE SCHEDULESERVICE--- Task started
23:40:33==> SERVICE SCHEDULESERVICE--- Task End
```

\*\*\*\*\* *The End* \*\*\*\*\*