



BIO - FACE READER WITH THERMAL SCREENING



Introduction

A new add on feature in Bio face reader is the **Thermal Temperature Screening**, which helps in checking an employee's physical well-being by scanning a person's body temperature while marking the attendance and displaying it on the screen. Also, the machine **denies the access in case of over temperature with audio/visual alert. This feature can work with multiple bio face reader installed in an office, which means a person can mark the attendance on any machine.**

In compliance to adhere the **No contact** policy in public areas, the bio face reader is providing a contactless attendance and access control experience with the help of biometric facial recognition technology which now also detects the human temperature with thermal temperature screening technology.

Features

- Thermal FAR infrared sensing spectrum: 9000~14000 nanometer
- Narrow point temperature sensing
- Temperature measurement range: 32~42 degree celsius
- Ambient temperature range : 16 to 50 degree celsius
- Measurement resolution 0.1 degree accuracy +/- 0.2 degree
- DSP data processing with FIR & IIR filter
- Person/date wise temperature report generation
- Aggregated report generation

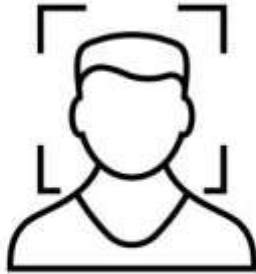
Specifications

- Processor : Cortex A7 Dual Core, 1Ghz Processor
- User Capacity : Enroll upto 10,000 user (One face enrollment)
- Display : 3.2", 240x320 TFT color 262K
- Keypad : Touch, Alphanumeric
- Dimension / Weight : L:165mm H:165mm W:135mm Weight:1.3kg
- Camera : High Resolution Infrared Camera
- IR LEDs for night vision
- Record capacity : Max 1000 days or up to 5 Lac records
- Recognition Algorithm : Feature extraction and pattern matching
- Verification Method : Face recognition / Proximity Card
- Verification Speed : Less than 1 Second
- Operating Distance : 40 – 80 cm
- Operating Temperature : 0 to 50 degree Celsius
- Operating Humidity : 20 to 90% non condensing

-
- Power : Max 15 watt
 - Environment Light : 0-500 Lux
 - Communication Method: Standard TCP / IP, USB Host / WIFI / GPRS
 - Installation Method : Wall mounting
 - Stored Template Size : 4KB Per User (12KB in case of 3 face enrollment)
 - Identification Time : 1 ~ 2 Second
 - USB Port : Pen Drive for firmware upgrade and data transfer
 - Connectivity Port : RJ45 Port for Ethernet Connectivity
 - Visual indicator : Green / Red for Acceptance & Rejection
 - Audio Indicators : Voice-Guided message (Adjustable volume)
 - Battery Backup : In-built battery 11.1V, 4800 mAh backup up-to 6 hours on Continuous punching and stand by up 20 hours.
 - Per Punch Size : 34 Byte

Operational Modes

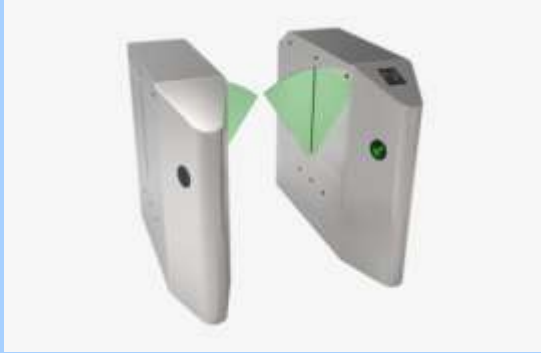
- Face recognition
- Proximity Card



Face Recognition



Capable to work with



Flap Barrier



Door Lock



Tripod Turnstile

Exit Button



Service & Support



For Any Biometric Needs

Contact US

Star Link Communication Pvt Ltd
D-88/4, Okhla Phase I, Okhla Industrial Area,
New Delhi-110020

Phone: 011 4059 8888(100 Lines)

Email: **sales@starlinkindia.com**

Toll Free No. **1800-11-8088**

Social Media



<https://www.facebook.com/starlinkcompvtld/>



<http://starlinkindia.blogspot.com/>



<https://www.instagram.com/starlinkindia/>



<https://in.pinterest.com/starlinkindia/>



<https://www.linkedin.com/company/starlink-communications-pvt-ltd/>



<https://twitter.com/starlinkindia>



<https://www.youtube.com/c/StarlinkIndiabiometricsaccesscontrol>



<https://starlinkindia.hubpages.com/>

THANK YOU....

Visit : www.starlinkindia.com

