



# *Bio Face Reader*

In House Designed & Developed

# Introduction

- The Bio face reader is robotically analyzing the facial expression like eyes, cheeks, ears and different facial elements via capture the photograph and match or maps it with the database. It has come upto 5 lakh transaction records. The system is capable of modeling a face in actual-time, with none manual initialization needed. Also, the machine can authenticate an employee through card.
- Face biometrics have the ability to be integrated anywhere you may discover a current digital camera. Law enforcement agencies the world over use biometric software to scan faces in cctv footage, as well as to identify person of interest in the field. Border control deployments use face recognition to confirm the identities of tourists. It even has client applications.

# Features

- ❑ IR LEDs for Night Vision
- ❑ Enroll Upto 10,000 User
- ❑ 3D Image Sensing
- ❑ High Speed Face Matching
- ❑ Voice Guided Message
- ❑ Upto 5 Lakh record capacity
- ❑ Keypad : Touch, Alphanumeric
- ❑ In-built battery 11.1V 4800 mAh backup up-to 6 hours
- ❑ Communication Method:  
Standard TCP / IP, USB Host /  
WIFI / GPRS



# Specifications

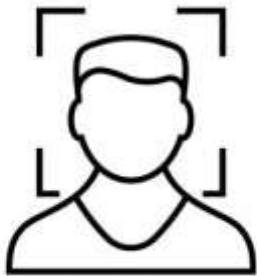
- Cortex A7 Dual Core, 1Ghz Processor
- Display : 3.2" ,240x320 TFT color 262K
- USB Port : Pen Drive for firmware upgrade and data transfer
- Communication Method: Standard TCP / IP, USB Host / WIFI / GPRS
- Operating Distance : 40 – 80 cm
- Operating Temperature : 0 to 50 degree Celsius
- Operating Humidity : 20 to 90% through Adapter
- Power : Max 15 watt
- Environment Light : 0-500 Lux
- Visual indicator : Green / Red for Acceptance & Rejection.
- Audio Indicators : Voice-Guided message (Adjustable volume)
- Battery Backup : In-built battery 11.1V, 4800 mAh backup up-to 6 to 6.5 hours on  
Continues punching and stand by up 20 hours. .
- Keypad : Touch, Alphanumeric
- Dimension / Weight : L:165mm H:165mm W:135mm Weight:1.3kg
- Punch Size : 34 Byte

# Face Recognition

- ❑ Camera : High Resolution Infrared Camera / 3-D Image analysis
- ❑ IR LEDs for Night Vision
- ❑ Verification Speed : Less than 1 Second
- ❑ Identification Time : 1 ~ 2 Second
- ❑ Per Punch Size : 34 Byte
- ❑ Recognition Algorithm : Feature extraction and pattern matching
- ❑ Verification Method : Face / Proximity card.
- ❑ Stored Template Size : 4KB Per User (12KB in case of 3 face enrollment)

# Operational Mode

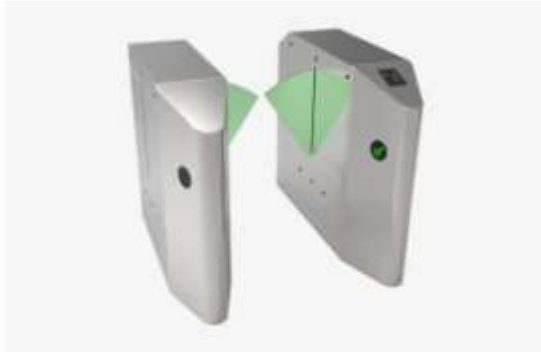
- Face recognition /
- Proximity Card



Face Recognition



# Capable to work with



**Flap Barrier**



**Tripod Turnstile**

**Door Lock**



**Exit Button**

# Service & Support





# For Any Biometric Needs

## **Contact US**

Star Link Communication Pvt Ltd  
D-88/4, Okhla Phase I, Okhla Industrial Area,  
New Delhi-110020  
Phone: 011 4059 8888(100 Lines)  
Email: **sales@starlinkindia.com**  
Toll Free No. **1800-11-8088**

# Social Media



<https://www.facebook.com/starlinkcompvtld/>



<http://starlinkindia.blogspot.com/>



<https://www.instagram.com/starlinkindia/>



<https://in.pinterest.com/starlinkindia/>



<https://www.linkedin.com/company/starlink-communications-pvt-ltd/>



<https://twitter.com/starlinkindia>



<https://www.youtube.com/c/StarlinkIndiabiometricsaccesscontrol>



<https://starlinkindia.hubhopper.com/>

**THANK YOU....**

**Visit : [www.starlinkindia.com](http://www.starlinkindia.com)**

