

Installation of Web TOS

Steps for installation of Web based Time Office Software:

1. Installation of Internet Information Services (IIS)
2. Installation of Dot Net Framework version 4.0
3. Registration of Dot Framework with IIS
4. Execute of Script on SQL Server
5. Attach Publish File of Web TOS in IIS
6. Setting of web.config file in Publish File
7. Installation of CR(Crystal Report) for 32 bit or 64 bit
8. Installation of Access Database Engine(Optional)
9. Running TOS Process EXE

Step 1: Installation of IIS.

(Refer to IIS_Install.docx)

Step 2: Installation of Dot Net framework version 4.0.

1. Open Web_LMS_Setup Folder and select DotNetFX4.0.
2. Open DotNetFX4.0 folder and run the Setup.



Step 3: Registration of Dot Framework with IIS.

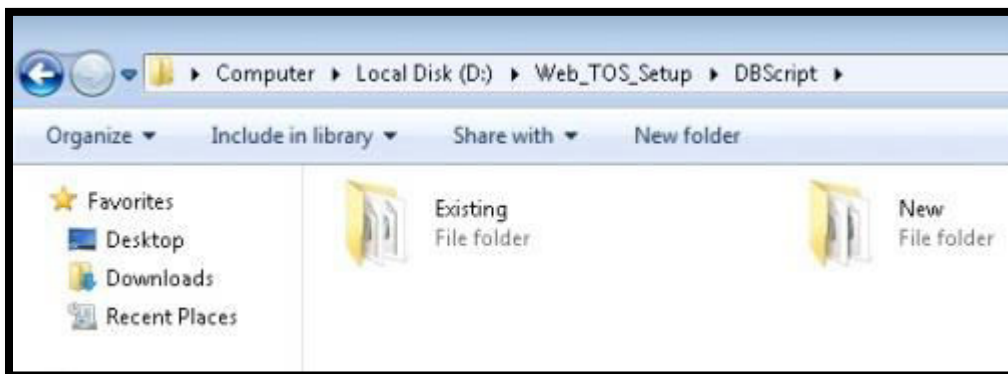
(Refer to Register.NETFramework.docx)

Step 4: Execute of Script on SQL Server

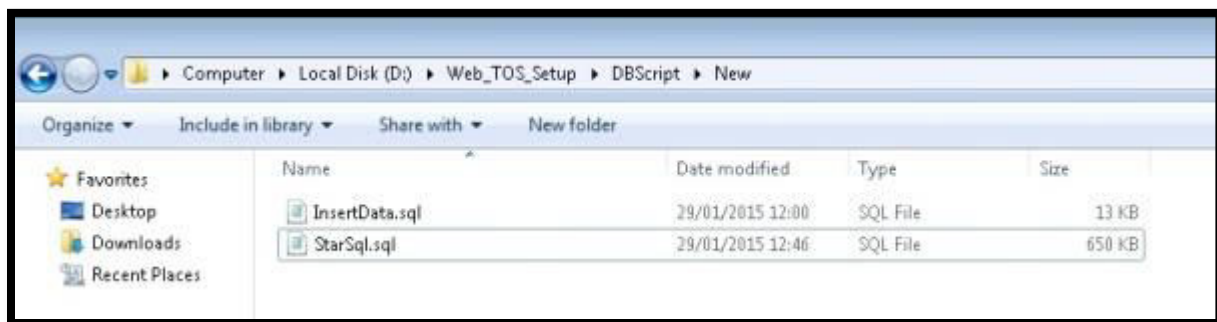
- a. There are two Folder named as Existing and New.

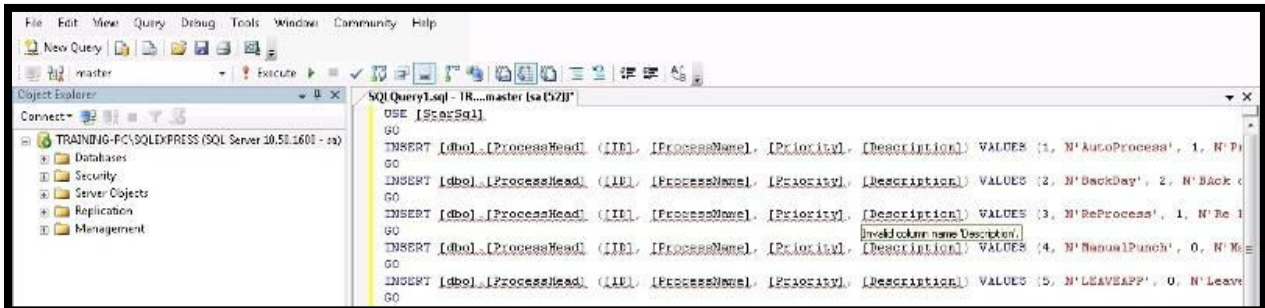
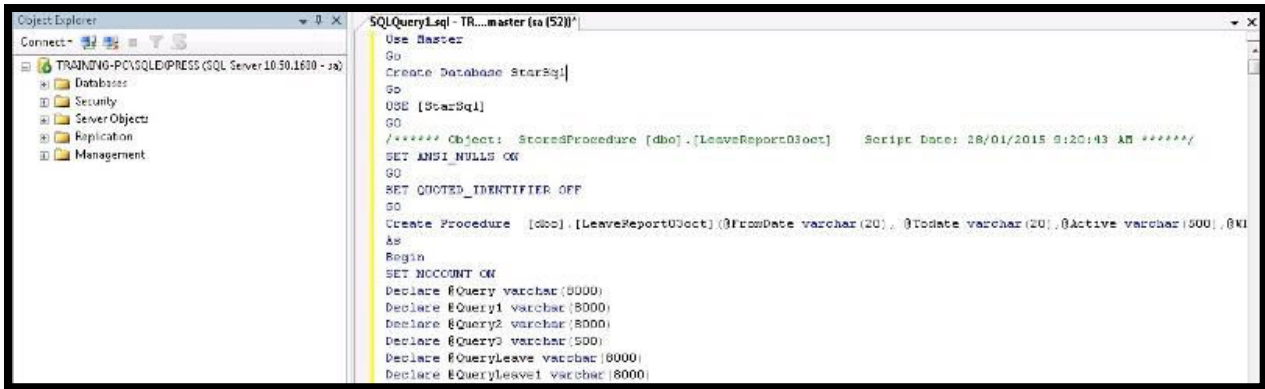
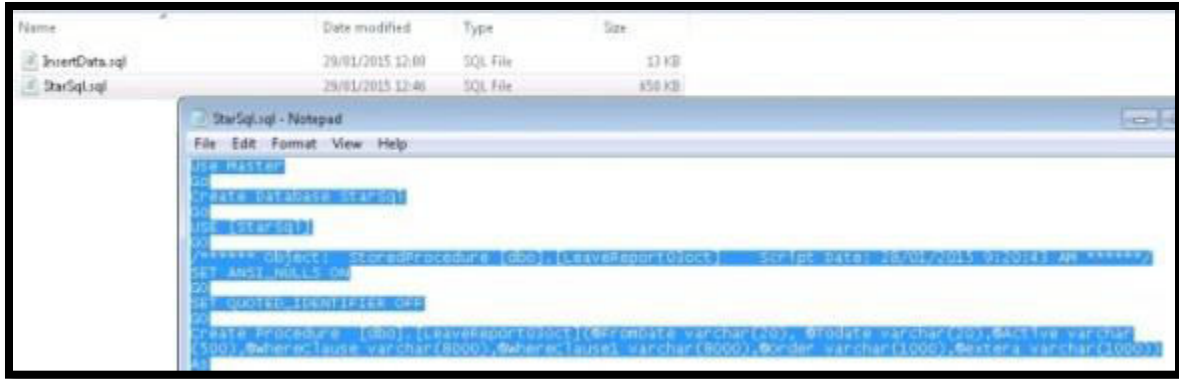
Existing- Use this Script when already Windows Time Office installed on the System.

New- Use this Script when fresh installation required.



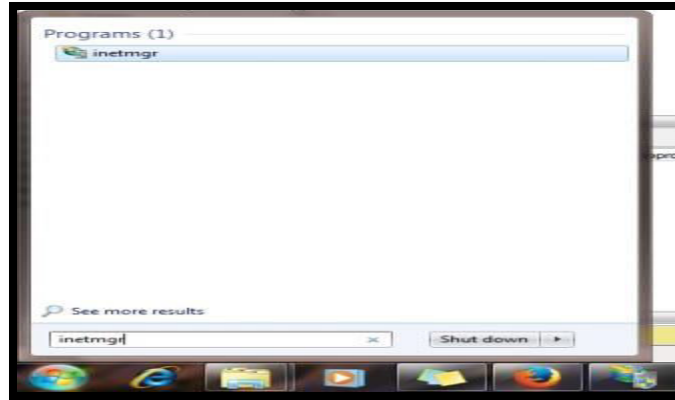
- b. Open New Folder and copy Script of both StarSql.sql and InsertData.sql and execute on SQL Server.



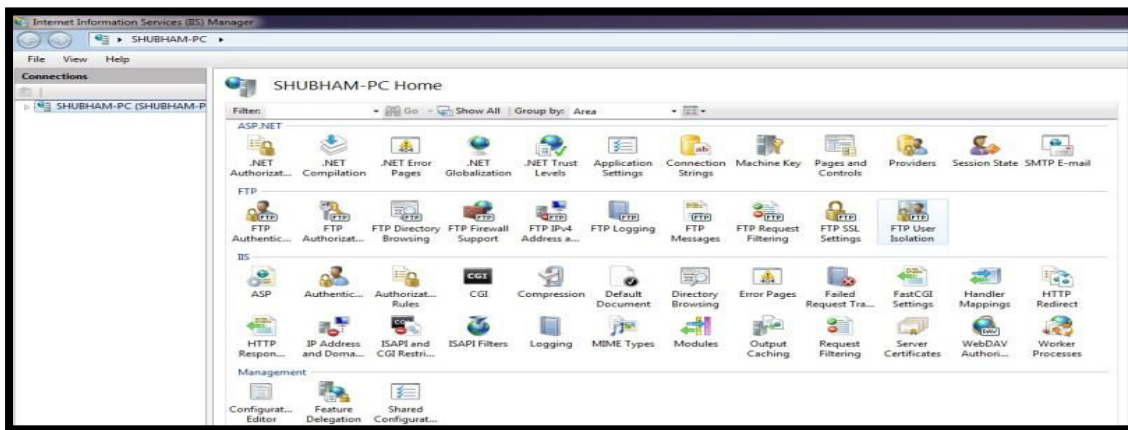


Step 5: Attach Publish File of Web TOS in IIS.

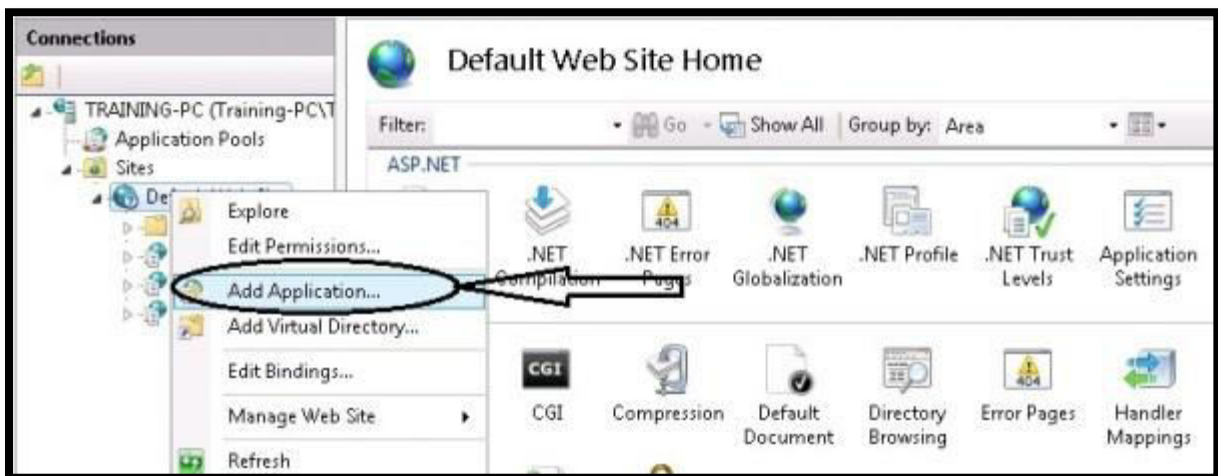
- a. Search inetmgr on search option.



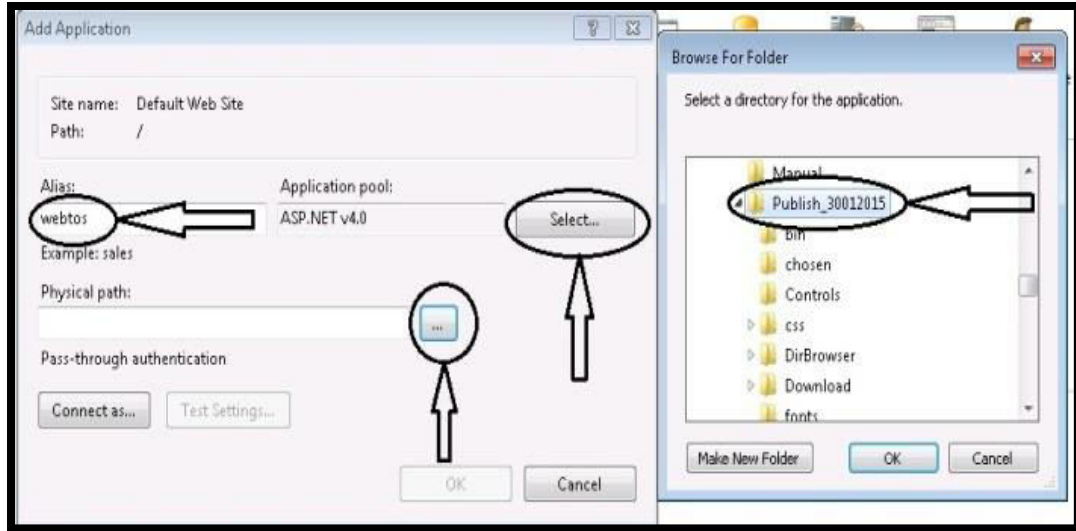
b. Following window will open.



c. Right click on Default Web Site and select Add Application...



d. Give Alias Name as webtos and then select Application pool. After that Browse to select Publish File as shown:



e. After selection of Publish File click on OK

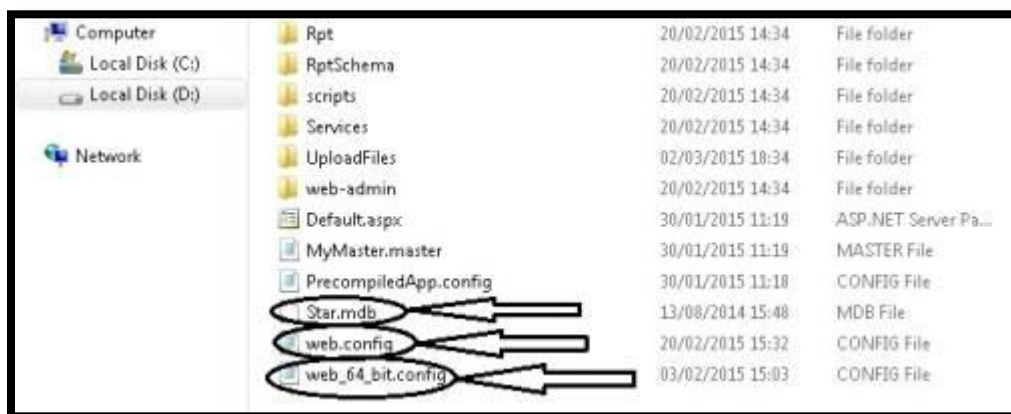
Step 6: Setting of web.config file in Publish File.

Open Publish File and change in this as:

Star.mdb- Copy License File

Web.config- This Config File is for 32 bit.

Web_64_bit.config- This config is for 64 bit.(Note: When change in this, the Name should be as web.config)



Open Web.config File and change in this as:

```
File Edit Format View Help
<?xml version="1.0"?>
<configuration>
  <configSections>
    <sectionGroup name="businessobjects">
      <sectionGroup name="crystalReports">
        <section name="rptBuildProvider" type="CrystalDecisions.Shared.RptBuildProviderHandler, CrystalDecisions.Shared, Version=13.0.2000.0, Culture=neutral, PublicKeyToken=692fba5521e1304, custom=null"/>
      </sectionGroup>
    </sectionGroup>
  </configSections>
  <connectionStrings>
    <add name="StarSqlConnection" connectionString="Data Source=TRAINING-PC\SQLEXPRESS;Initial Catalog=StarSq; User ID=sa; password=star" providerName="System.Data.SqlClient" />
    <add name="DCConnectionString" connectionString="Data Source=SDOWIN7-PC\SQLEXPRESS;Initial Catalog=Datacapture;User ID=sa; password=star" providerName="System.Data.SqlClient" />
  </connectionStrings>
</configuration>
```

After that open Browser and write on this as:

localhost/webtos



Step 7: Installation of CR(Crystal Report) for 32 bit or 64 bit.

(Refer to CR_Installation)

Step 8: Installation of Access Database Engine(Optional)

(Refer to AccessDE_Installation)

Step 9: Running TOS Process EXE

- a. Open TOS_Process Folder and copy Star.mdb(License File) to this Location.

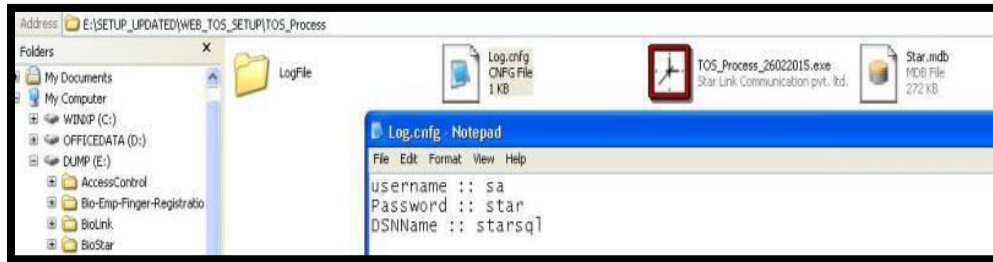


- b. Open Log.cnfg File and set in this as:

username :: sa(User Name of Server)

Password :: star(Password of User)

DSNName :: starsql(DSN Name of ODBC)



c. After that Click on Process EXE.

Note:

a. This is for execute request send by TOS User.

b. Must be Create **DSN** to execute this Process EXE.

(Refer to StarSql_DSN_Installation)

****THE END****