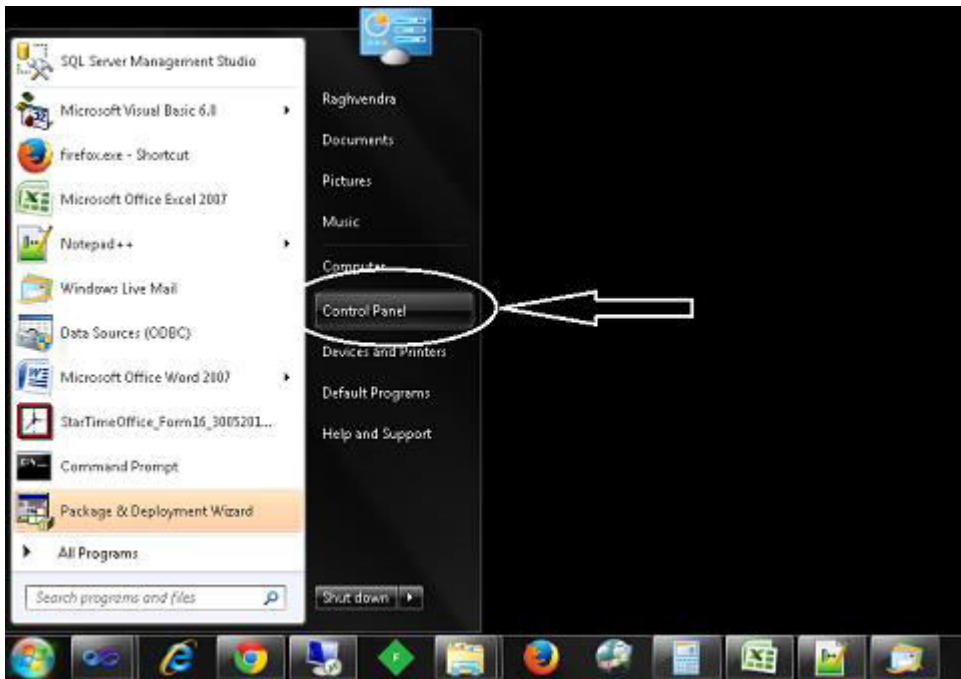


1. IIS Installation on Windows 7 and windows 8

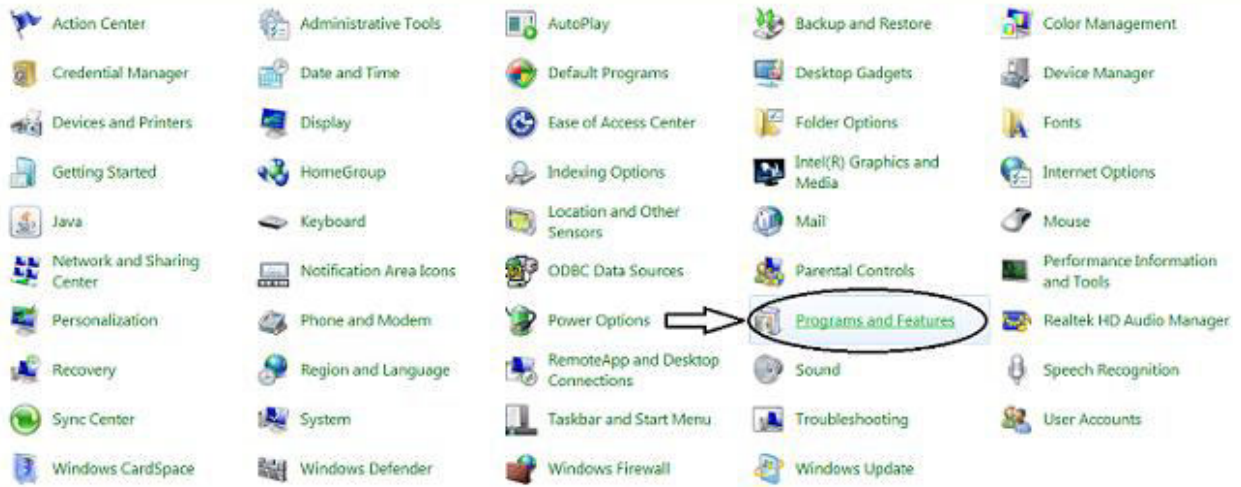
a. Open Control Panel



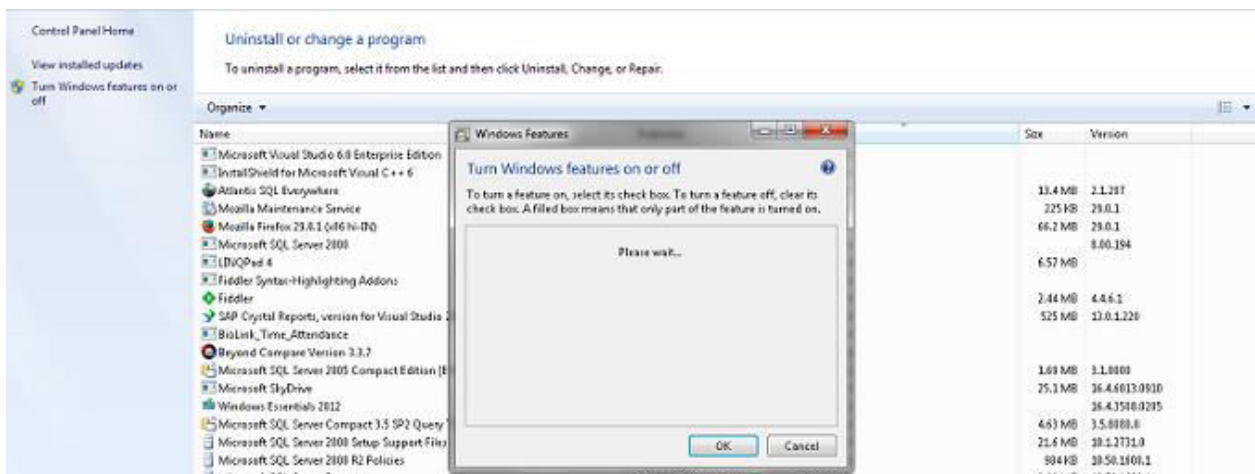
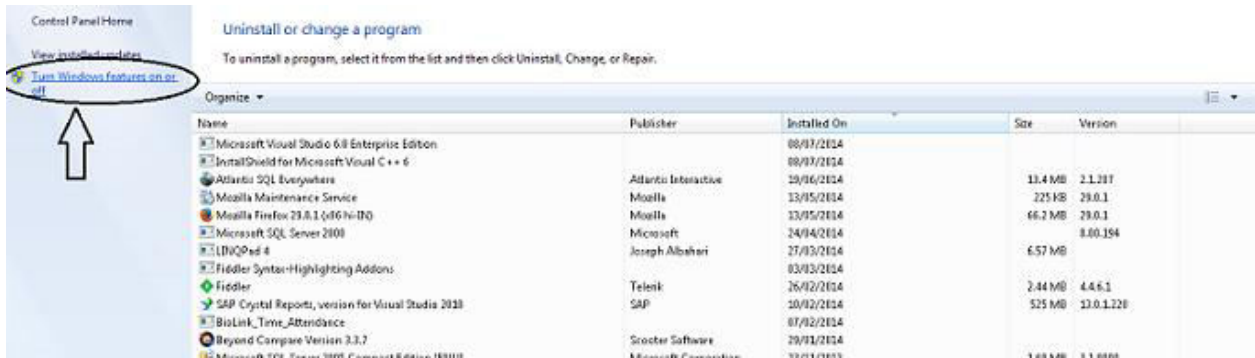
b. Click on Control Panel and windows will open

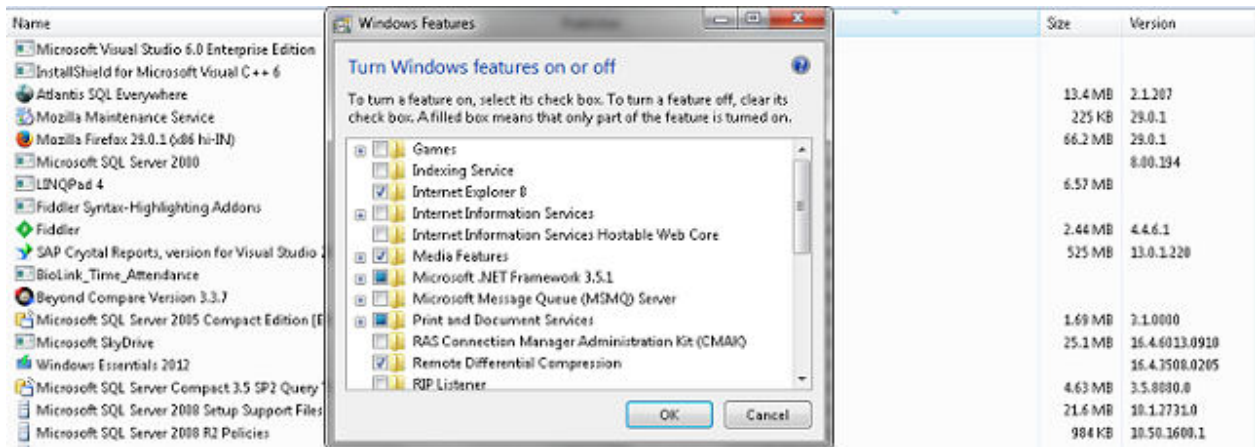


c. Select Programs and features

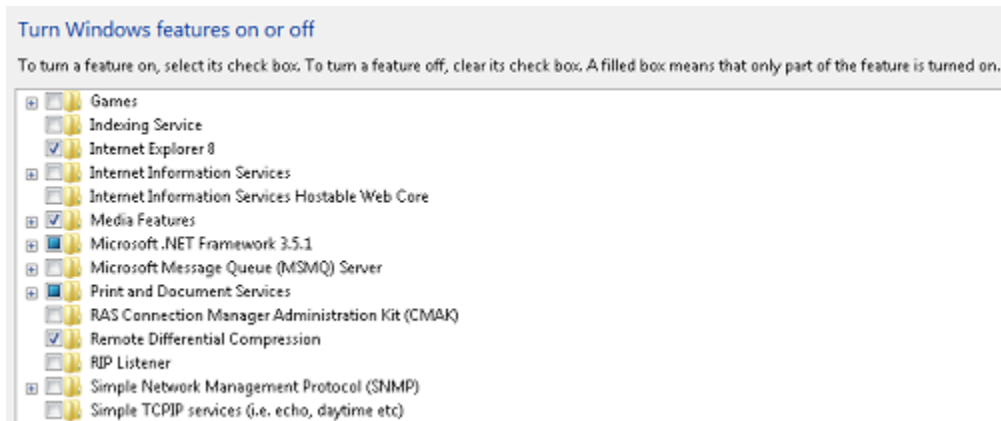


d. Then select Turn Windows features on or off

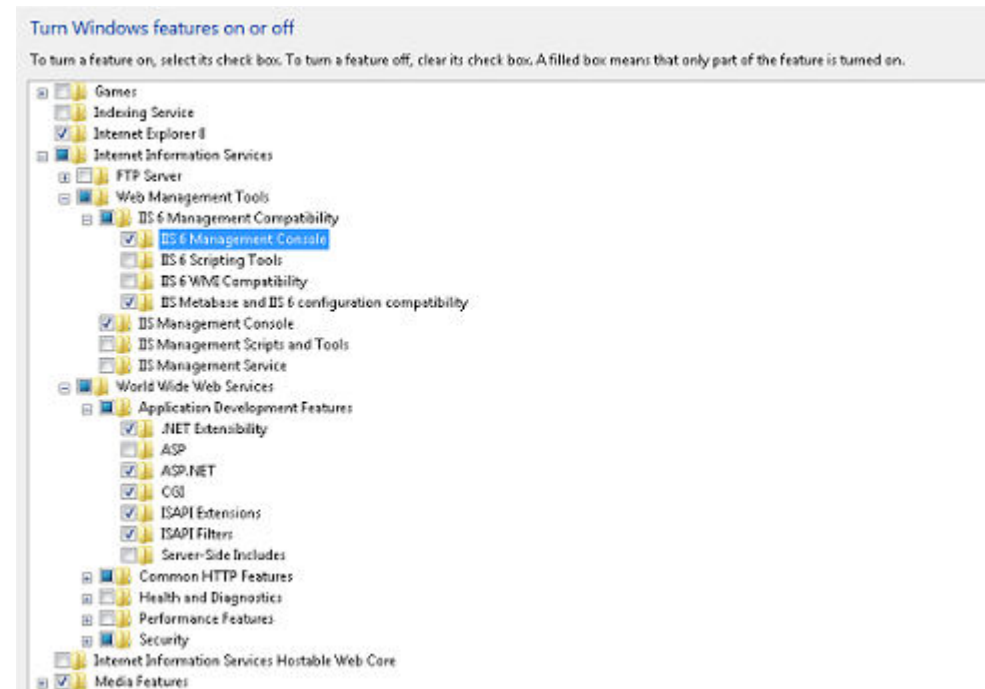




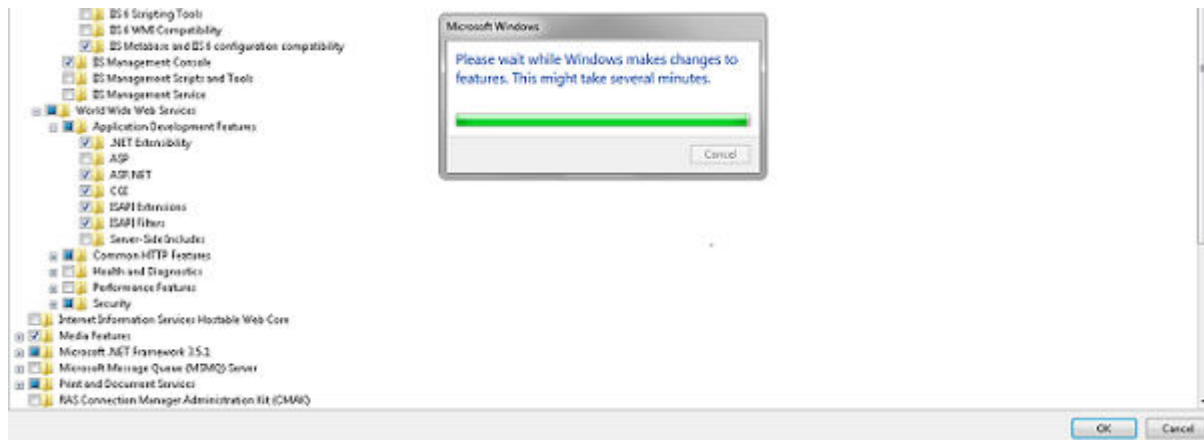
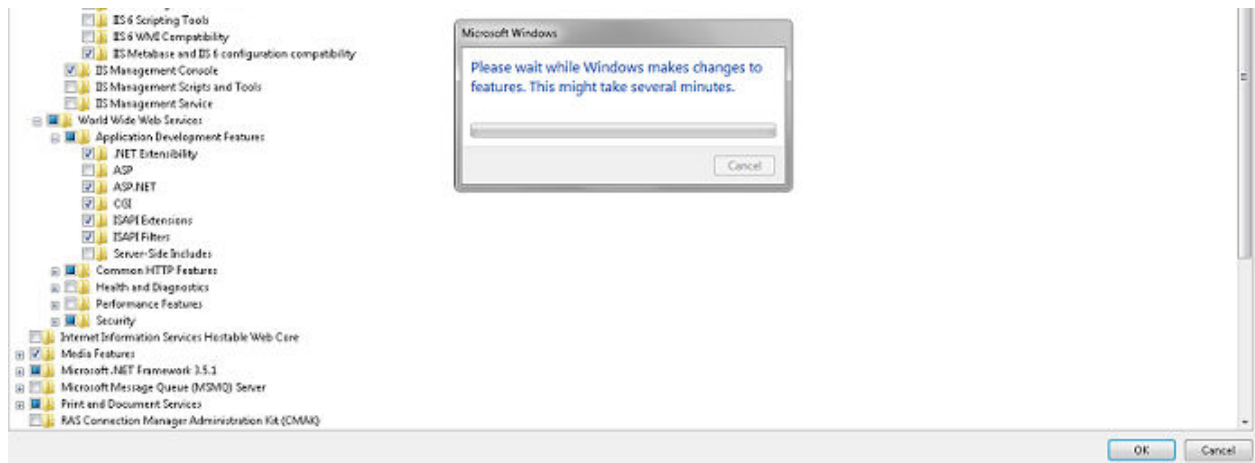
e. Check on Microsoft .NET Framework 3.5.1



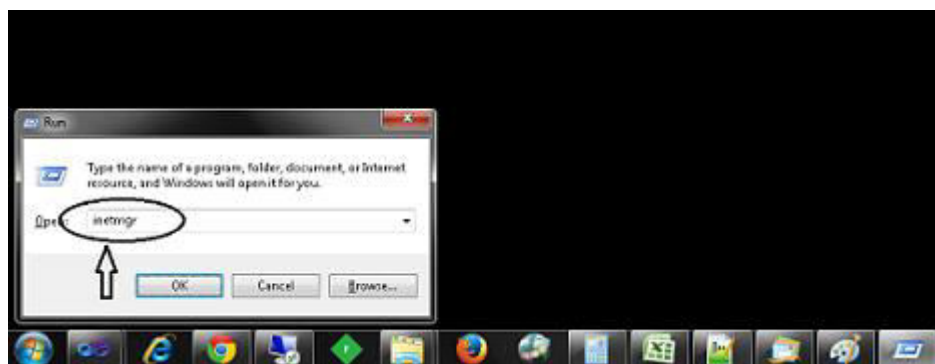
f. Open sub folder of Internet Information Services and Check in this as shown below



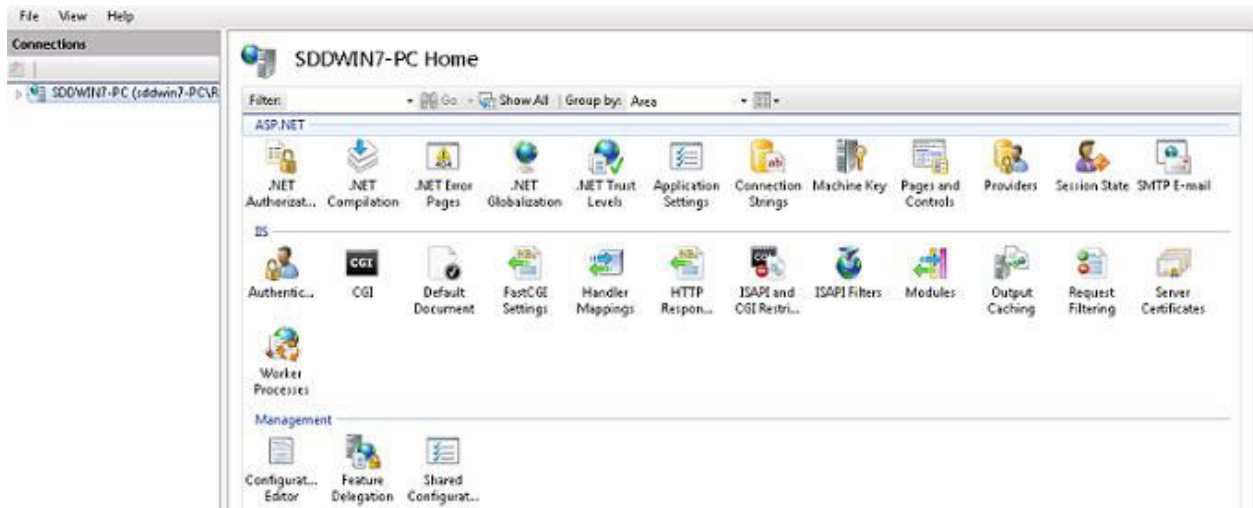
g. After check click on OK button



h. For check IIS installed or not, search inetmgr on search button

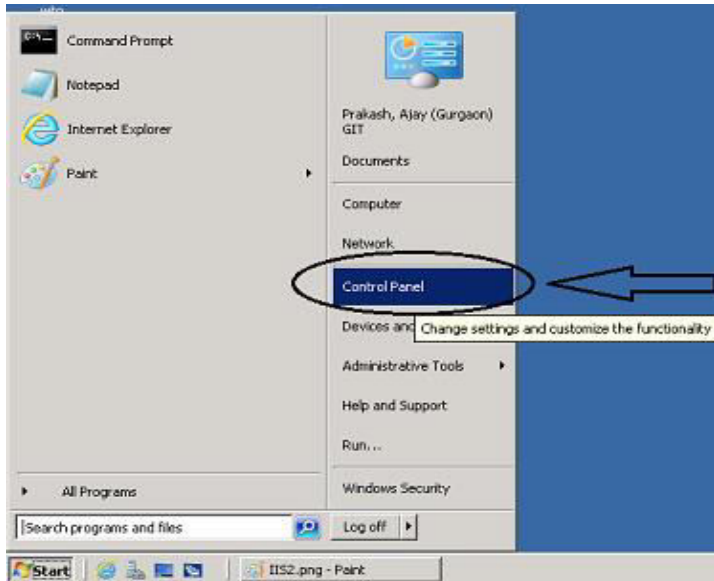


i. If installed below window will be open



2. IIS installation on Server 2008 and above

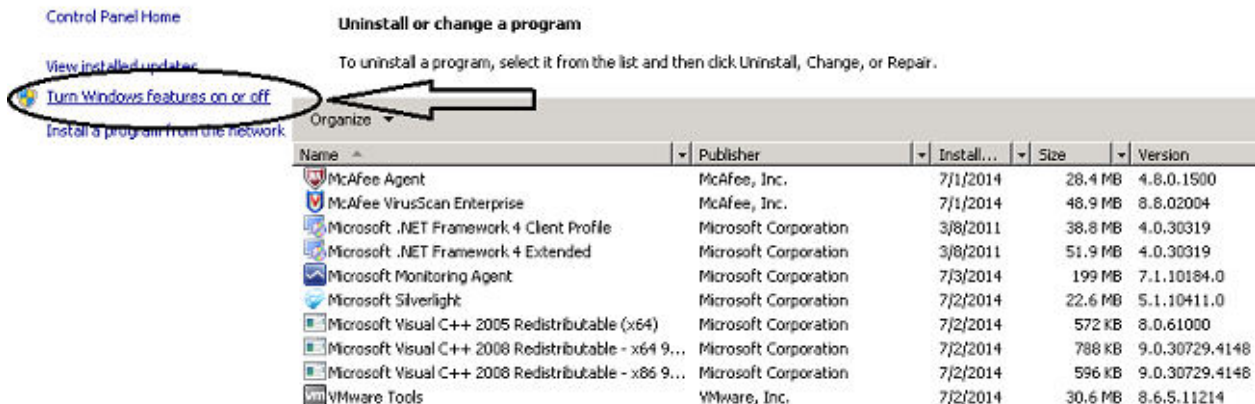
a. Click on Control Panel Button.



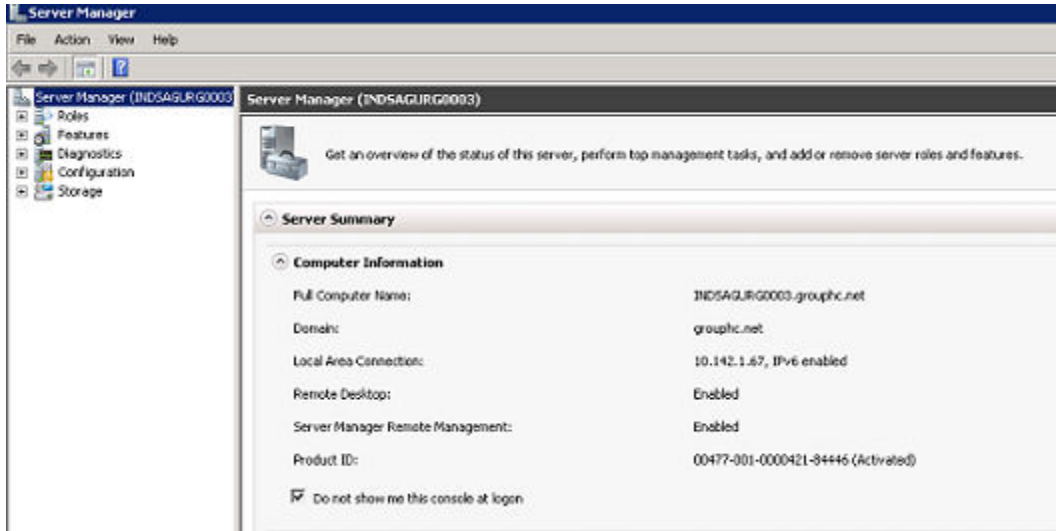
b. Select Program and Features option



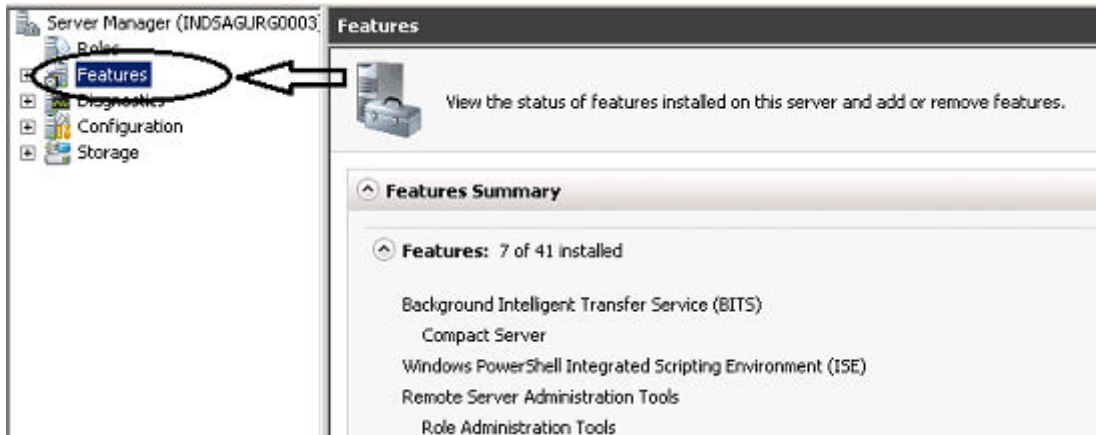
c. Then select Turn Windows features on or off



d. The following window will be open



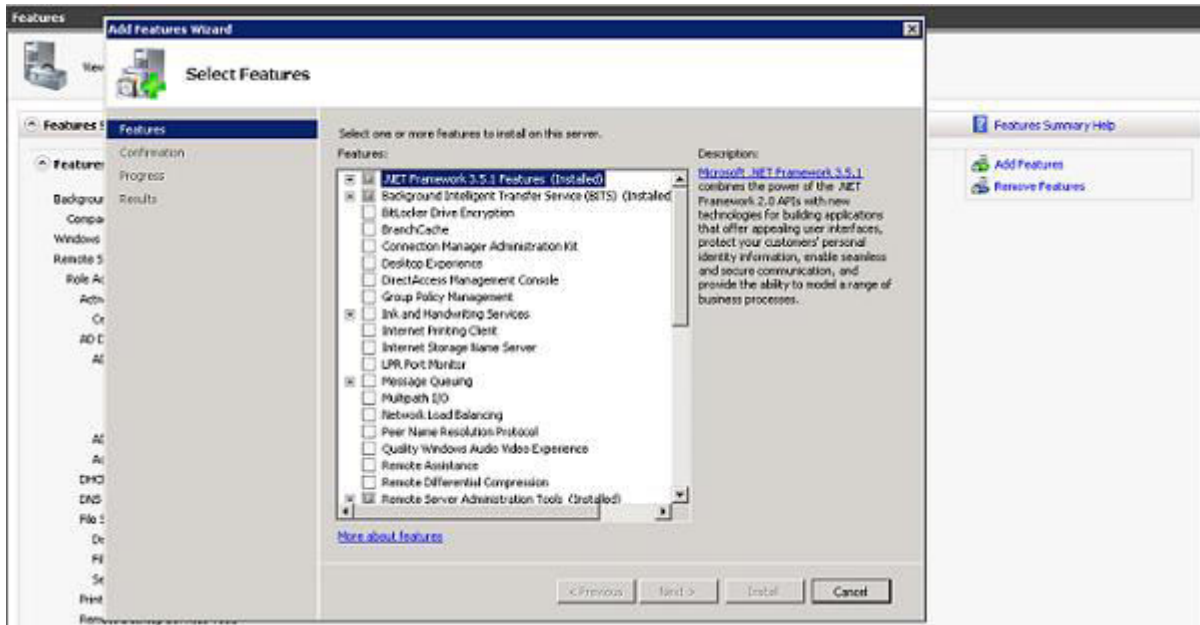
e. Select Features option



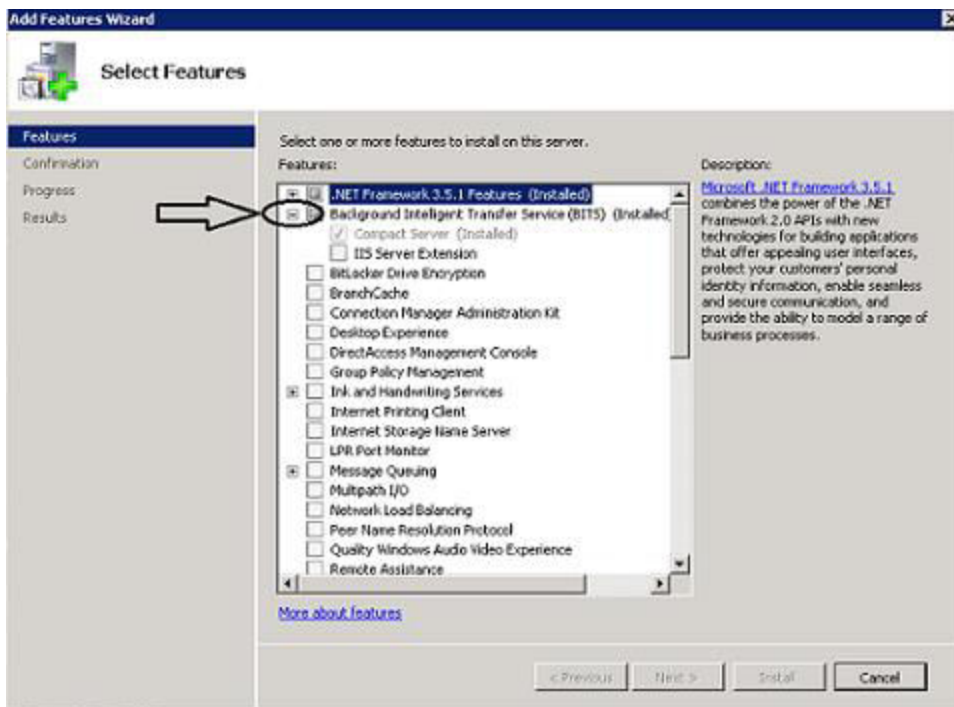
f. Select on Add Features option



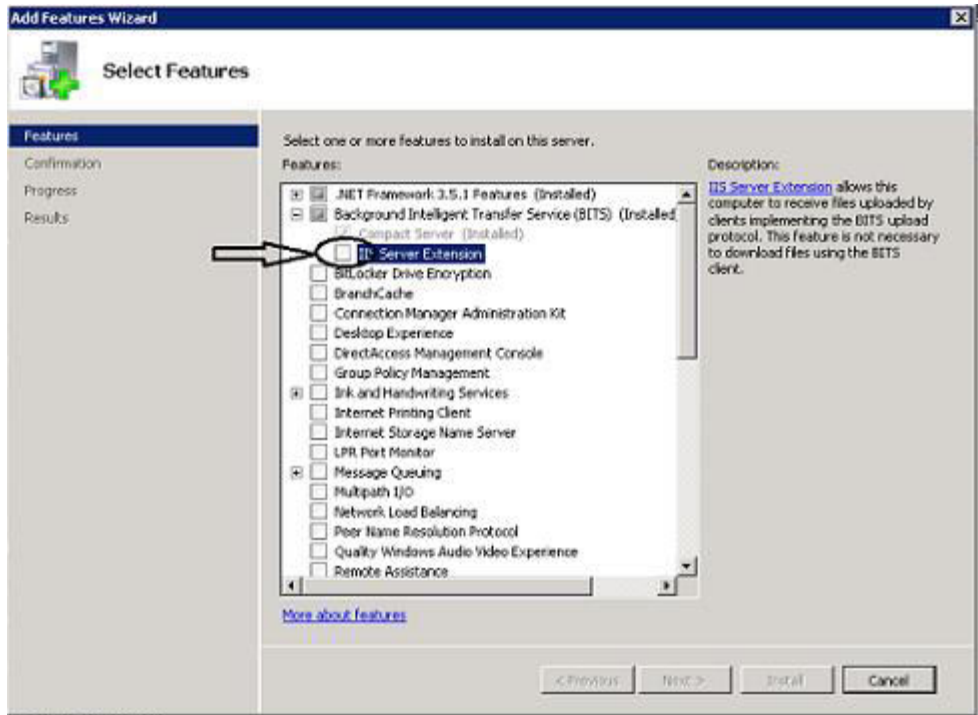
g. The following Window will be open



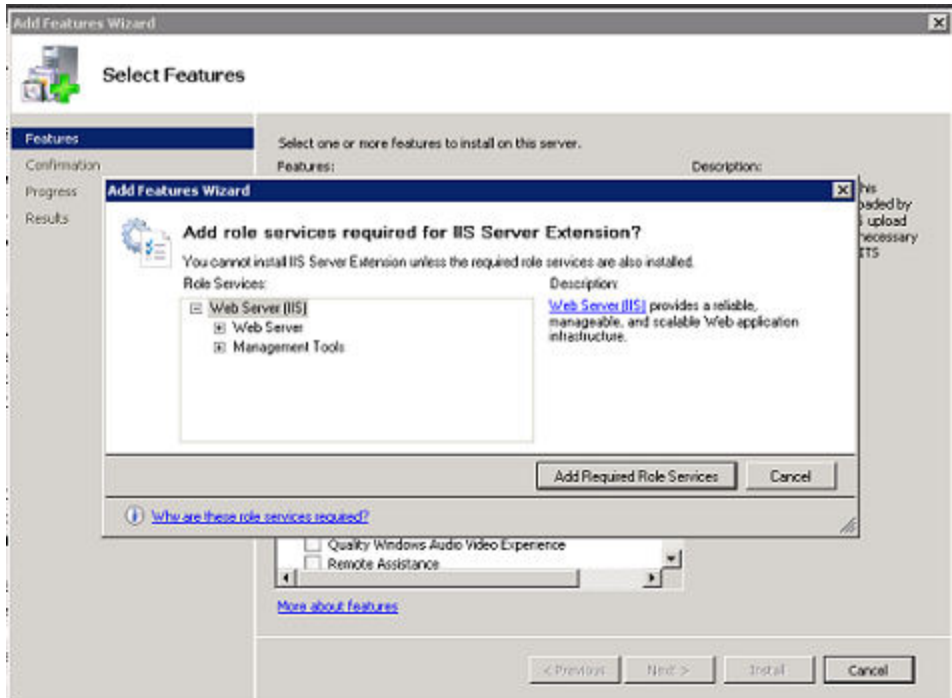
h. Click on Background Intelligent Transfer service(BITS)



i. Select IIS Server Extension



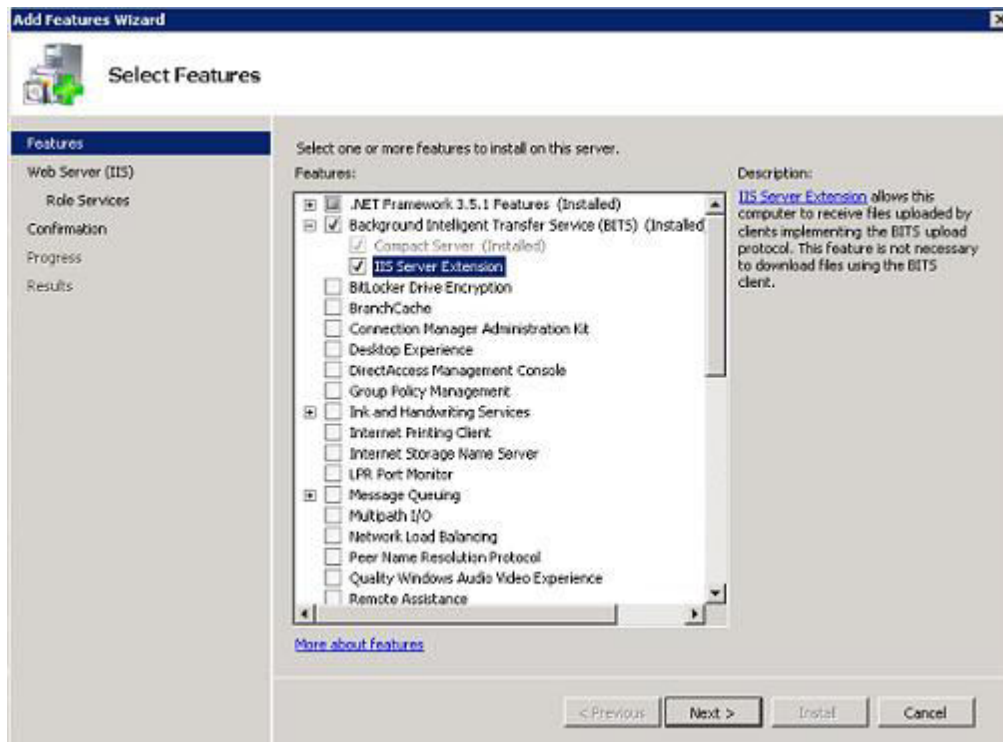
j. The following window will be open as below



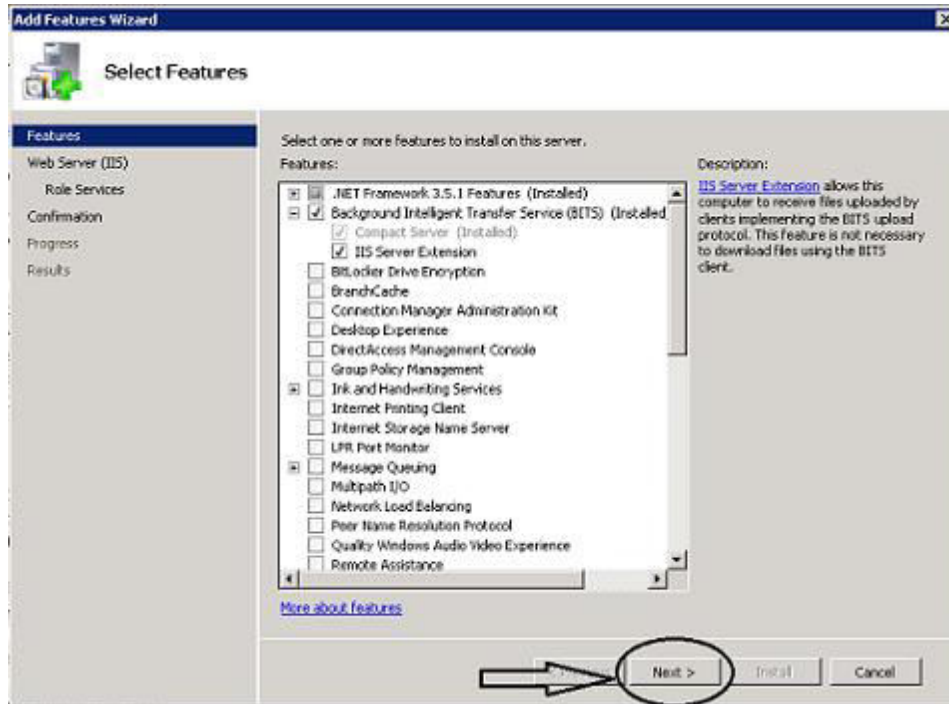
k. Click on Add Required Role Services



l. The following window will be open



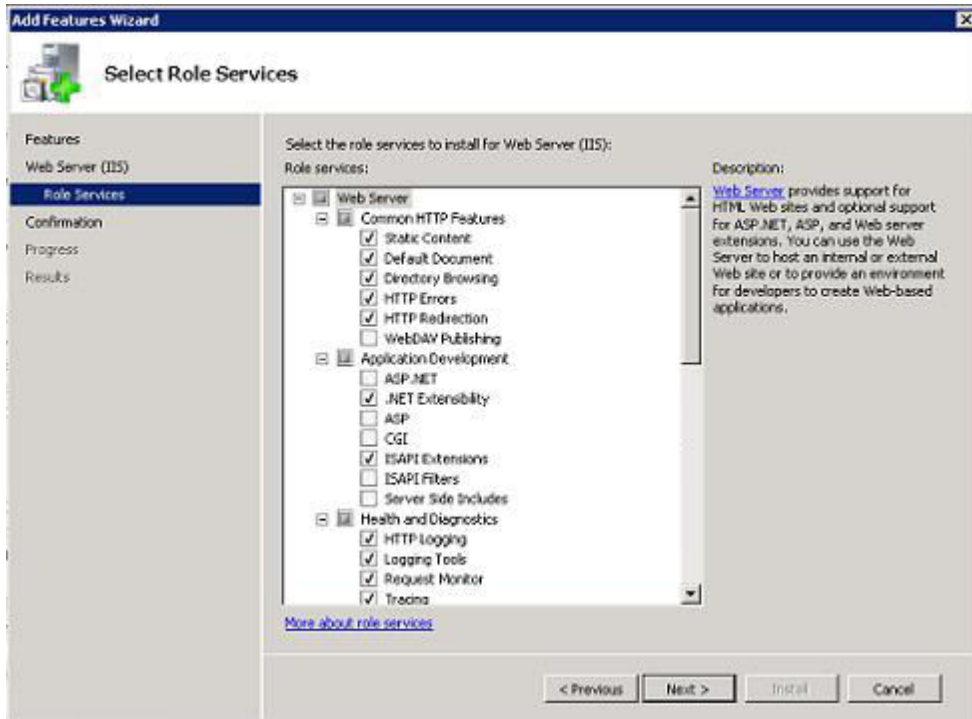
m. Click on next button



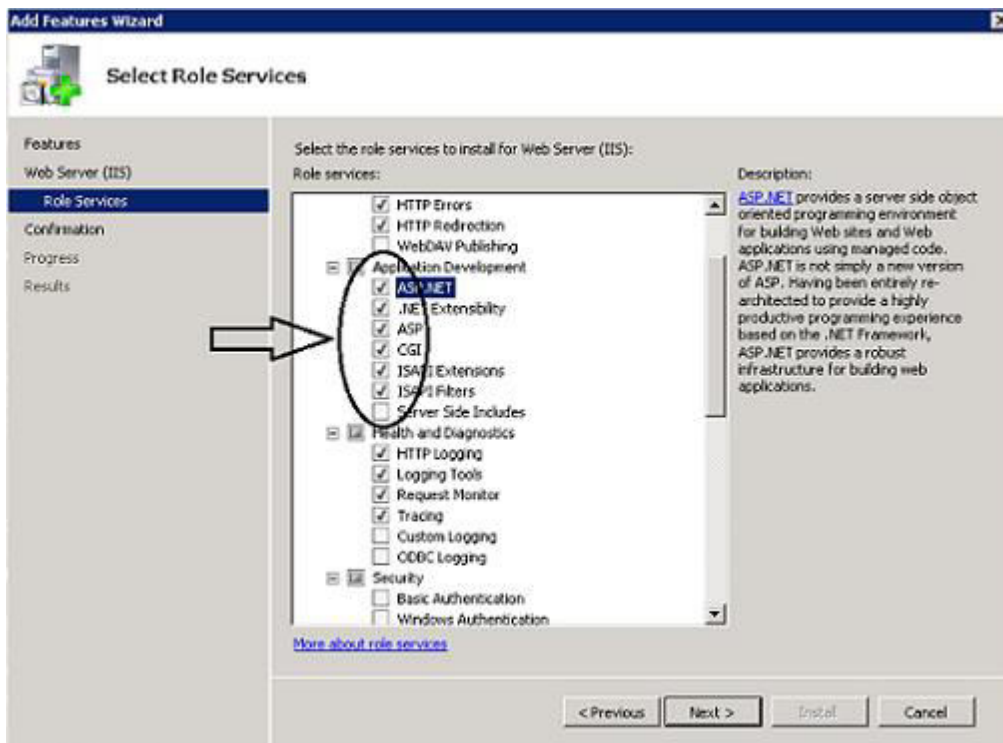
n. Again click on next button



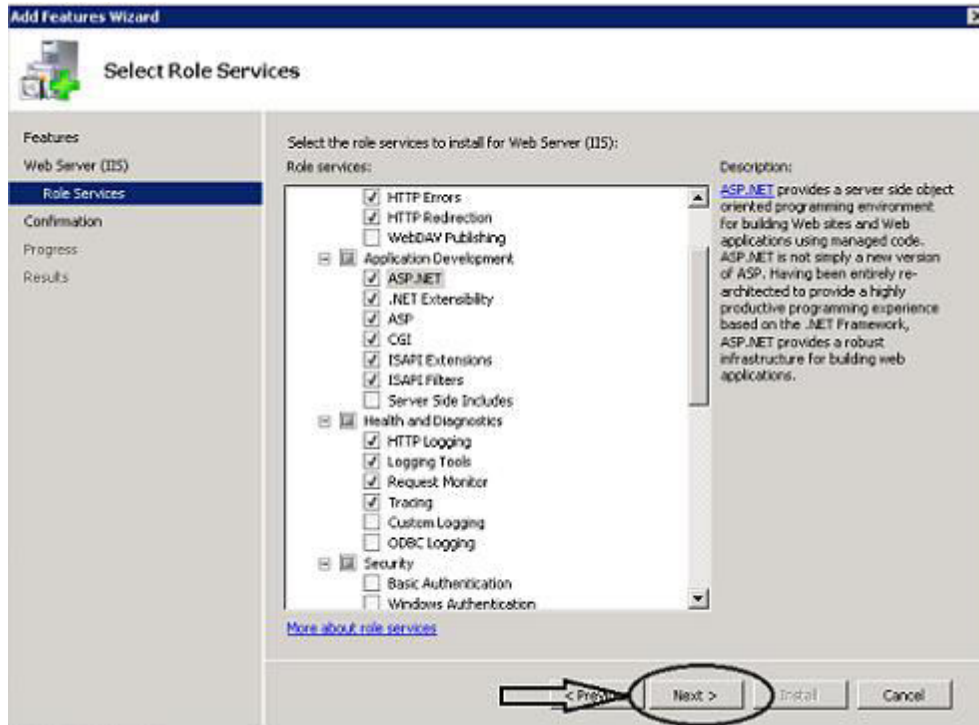
o. The following window will be open



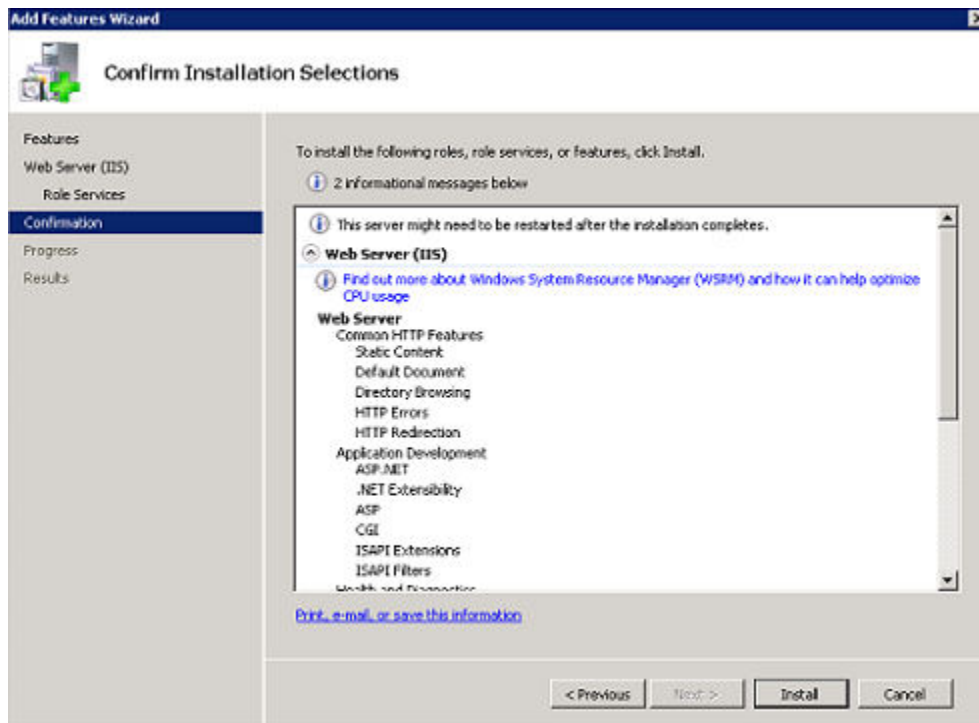
p. Check on the following option



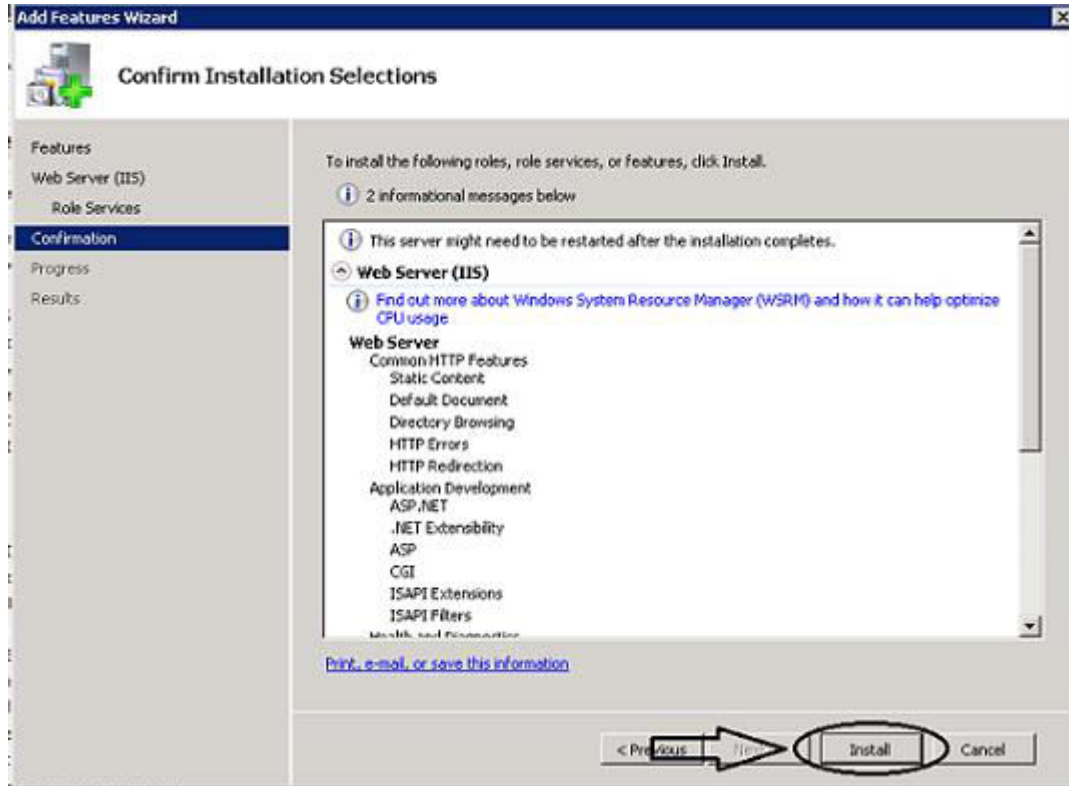
q. Click on Next button



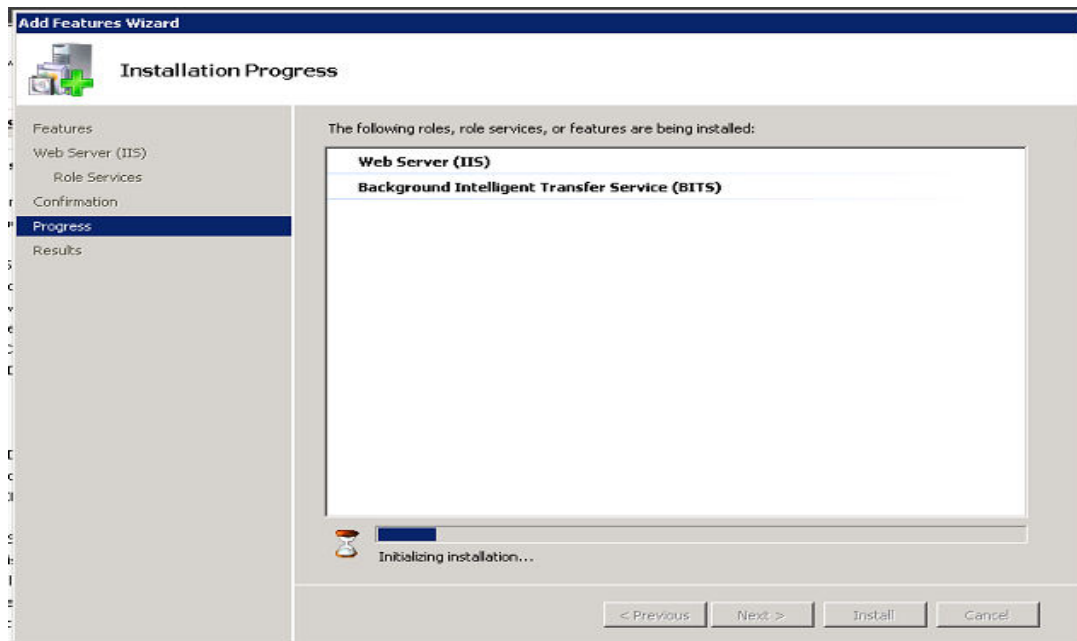
r. After that the following Window will be shown



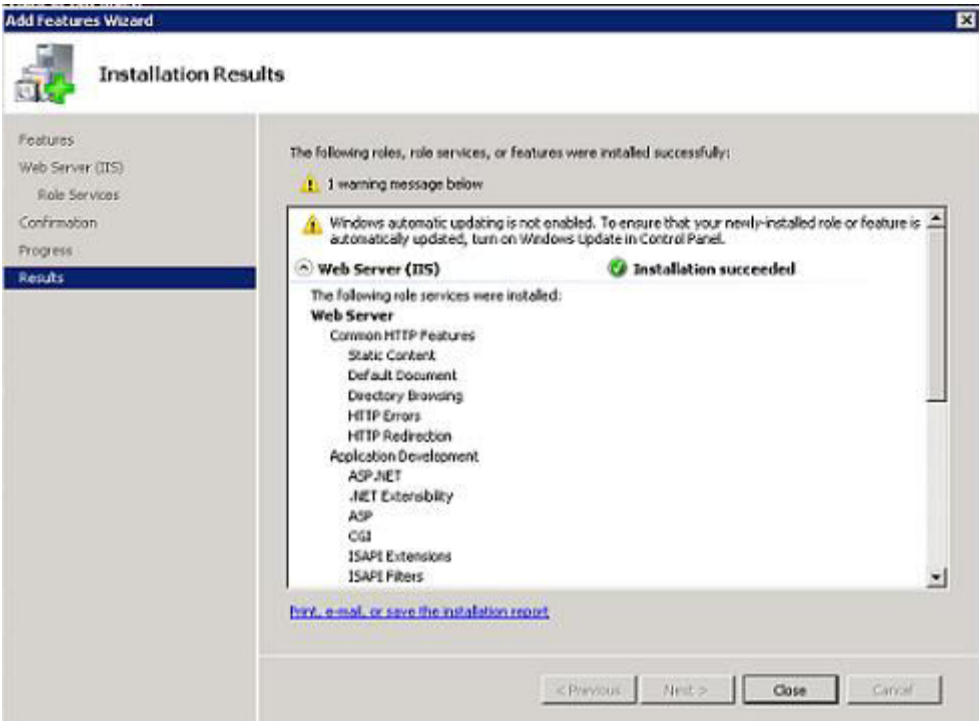
s. Click on Install button



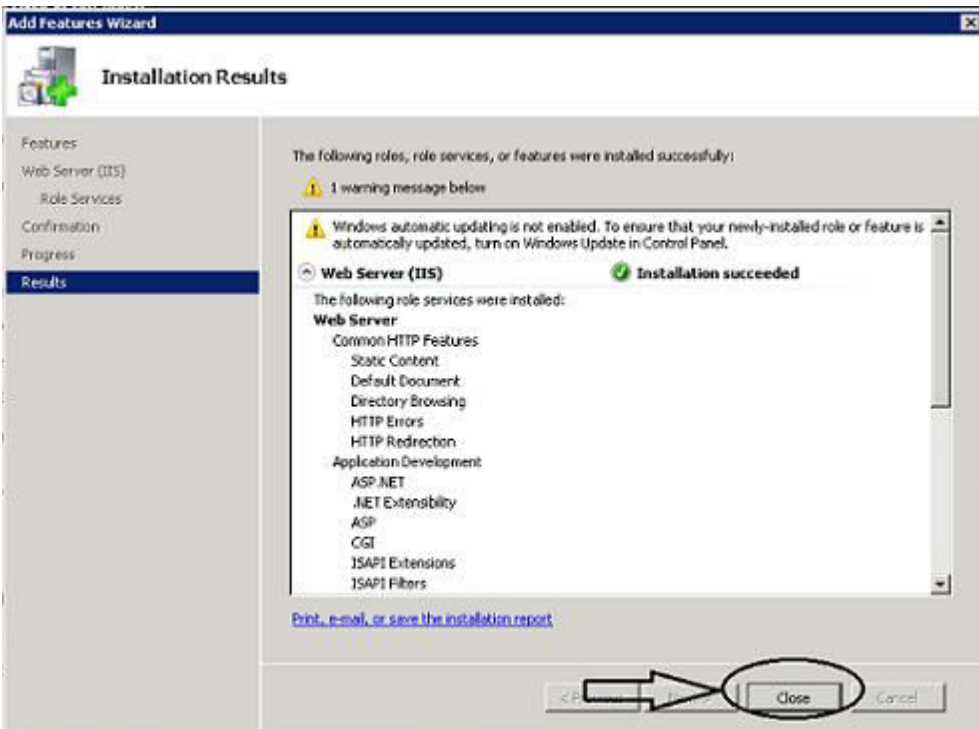
t. After that installation will be started



u. After some time Installation will be done



v. Then click on Close button



w. The final window will be shown as below. You can minimize, maximize and close this window

