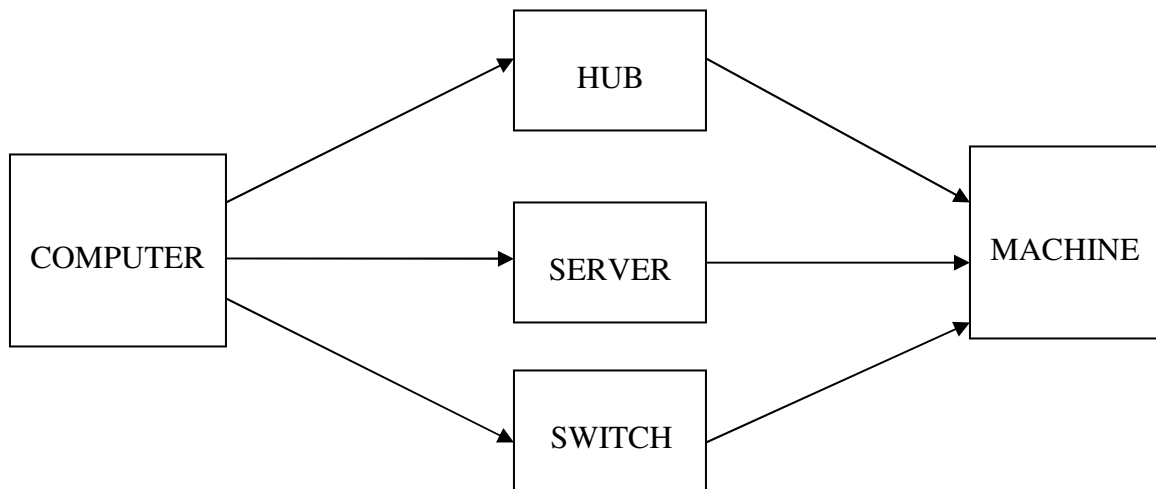


TCP/IP (TRANSMISSION CONTROL PROTOCOL/INTERNET PROTOCOL) Connectivity Of Machine:

There are two methods of connecting machine through TCP/IP.

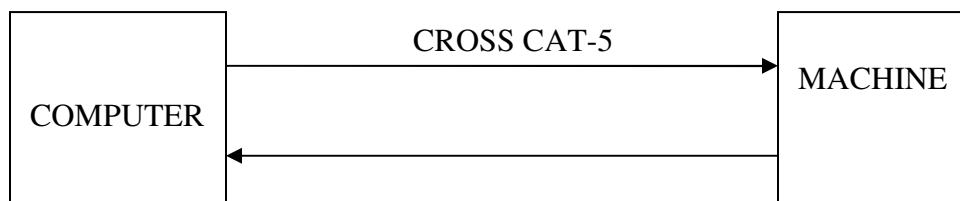
1. NORMAL CONNECTION (N/W ORIENTED)
2. CROSS CONNECTION (POINT 2 POINT)

1. NORMAL CONNECTION : In this Connection we connect m/c to the computer via Network(or through HUB,Server,Switch).And In this process uses 'State Cable' for connection.



BLOCK DIAGRAM OF NORMAL CONNECTION

2. CROSS CONNECTION: In this Connection we directly connect m/c to the computer. And In this process uses 'Cross Cable' for connection.



BLOCK DIAGRAM OF CROSS CONNECTION

TYPES OF IP

1. STATIC IP
2. DYNAMIC IP

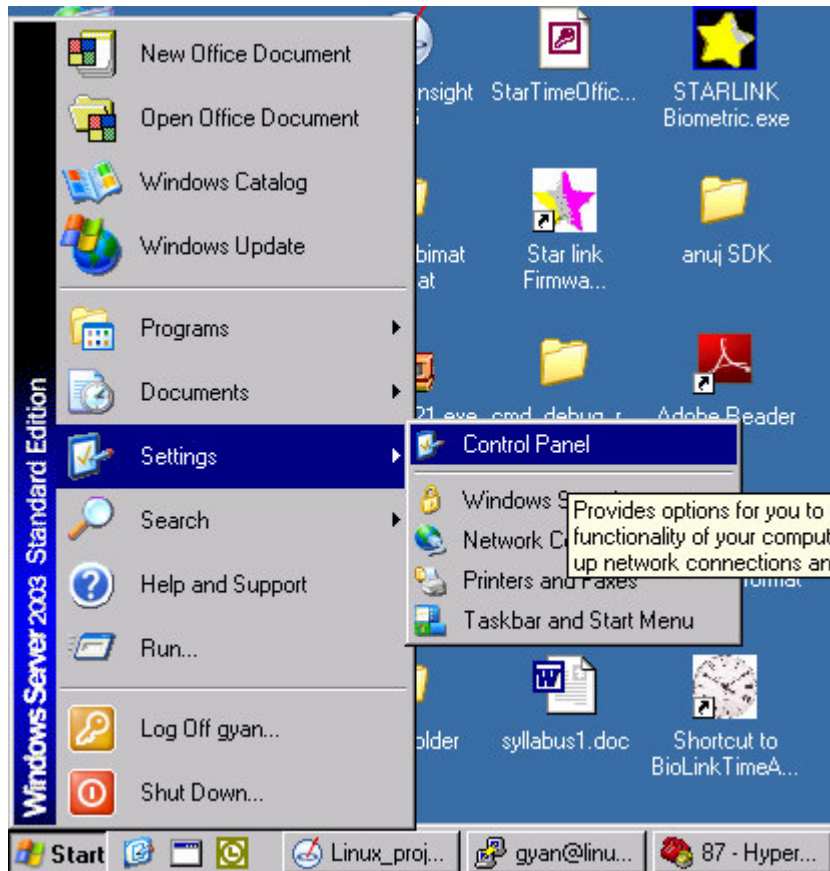
STATIC IP: THE PORT WHICH IP IS FIXED IS KNOWN AS **STATIC IP**.

DYNAMIC IP:THE PORT WHICH IP CHANGES IN EACH CONNECTION IS KNOWN AS **DYNAMIC IP**.

DHCP(DYNAMIC HOST CONTROL PROTOCOL):THIS PROTOCOL ALLOCATE IP DYNAMICALLY TO HOSTS .

SETUP OF IP OF COMPUTER:

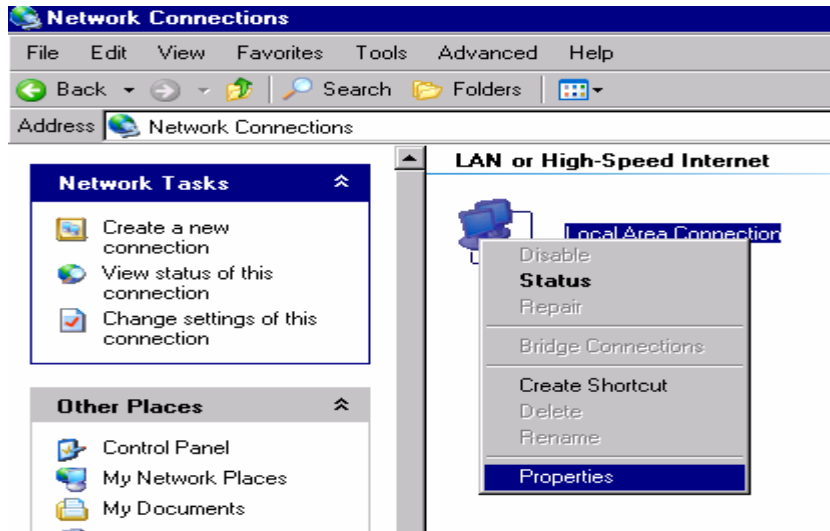
- CLICK ON START
- GOTO THE SETTING
- GOTO THE CONTROL PANEL



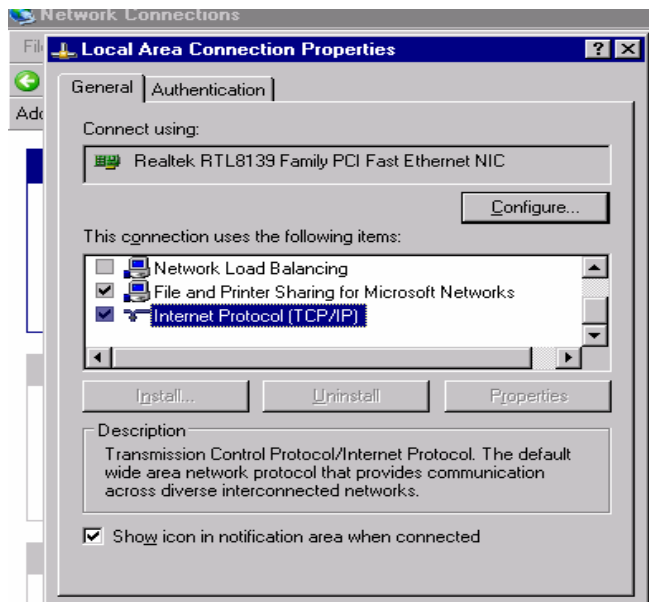
GOTO THE NETWORK CONNECTION



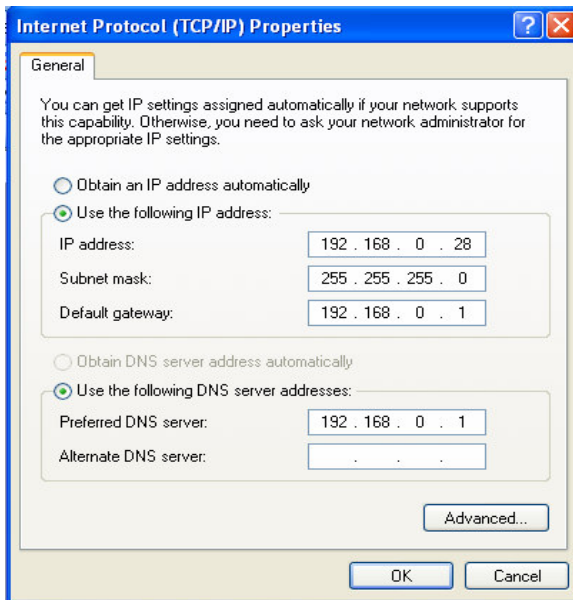
Where you find Local Area Network Connection. Write click on that icon and goto properties.



After Clicking on properties goto Internet Protocol(TCP/IP). Which is showing on figure.



After clicking on Internet protocol a new window open like



By this window you can change Ip and all things which are showing on this window.